

*NORTH TEJON STREET*

---

**OUR VICTORIAN LANE  
IN  
COLORADO SPRINGS**



**BLOCKS 1200-2100 OF  
NORTH TEJON STREET**

***NORTH TEJON STREET***

---

**OUR VICTORIAN LANE  
IN  
COLORADO SPRINGS**

**BLOCKS 1200-2100 OF  
NORTH TEJON STREET**

**A photo album of one of  
the most picturesque streets  
of Victorian-era homes in  
Colorado Springs, Colorado**

**PHOTOS AND TEXT BY  
ROBERT D. LOEVY**

**The Old North End Neighborhood  
2022**

***NORTH TEJON STREET***

---

# **CONTENTS**

<b>Introduction</b>	<b>Page 5</b>
<b>East Side (odd numbers)</b>	<b>Page 9</b>
<b>West Side (even numbers)</b>	<b>Page 85</b>

# **INTRODUCTION**

Ten blocks of North Tejon Street in Colorado Springs qualify as Our Victorian Lane. From East Uintah Street to East Madison Street – the 1200 block to the 2100 block – are concentrated a large number of Victorian-era upper middle-class homes financed in large part by the gold that was flowing from the ground in the nearby mining camps of Cripple Creek and Victor.

This book serves as a catalogue of these many homes, most of which date to the turn of the Twentieth Century (1890 to 1910). One can quickly thumb through it and gaze at the photographs. Those with more time can read the details of each house's basic architecture and, here and there, learn about who lived in these houses and what they accomplished in the history of Colorado Springs. In the course of such reading, the uninitiated can begin to learn about the basic architectural styles found in these ten blocks of a picturesque city street.

***NORTH TEJON STREET***

---

**EAST SIDE**

**ODD NUMBERS**

**1201 TO 2129**

**NORTH TEJON  
STREET**

***NORTH TEJON STREET***

---



## ***NORTH TEJON STREET***



### **1201 NORTH TEJON STREET**

**Architect David Barber bought three properties on North Tejon Street in the Old North End. The Victorian structures on the lots either had been removed or were removed. In their place Barber built three new houses of modern shape but designed to fit into an older neighborhood. Gable roofs along with wood siding and wood shingles were the major Victorian elements applied. This particular house has wood siding on the lower walls as well as fish scale shingles in the front gable. It also has a front-facing Palladian window – a center arched window with two smaller windows on both sides.**

***NORTH TEJON STREET***

---



**1205 NORTH TEJON STREET**

**This David Barber designed house is next door to the previous Barber designed house. Wood siding on the walls and fish scale shingles in the front gable help to relate the two houses to each other as well as the neighborhood. The main entrance to this home is on the side of the house to the left.**

***NORTH TEJON STREET***



**1211 NORTH TEJON STREET**

**This home has three dormer windows on the second floor. There is a pediment over the front porch.**

## ***NORTH TEJON STREET***



### **1219 NORTH TEJON STREET**

**This home has a Gable Front design with a large wrap-around front porch and the main entrance covered by a pediment. There is wood siding on the exterior walls on the first floor but square wood shingles in the gable front on the second floor. Three windows are located in the gable front. There are round wooden columns and an open railing on the front porch. A nice feature is the circular porch and porch railing at a corner of the house. W. Arthur Perkins, president of the Perkins-Shearer clothing store, built the house in 1887 and lived in it for 50 years with his wife Emily.**

***NORTH TEJON STREET***



***1223 NORTH TEJON STREET***

**Behind all the trees lurks a Victorian home. It sports a two-story high bay window and a partial-length front porch with a balcony above. Both the front porch and the balcony have an open railing. An unusual feature is a long dormer on the third floor with four windows in it.**

---

***NORTH TEJON STREET***

---



**1225 NORTH TEJON STREET**

**This home has a full-length front porch with square wooden pillars supporting the front porch roof. There is a large third-floor dormer with three windows in it. A notable feature of the house on the second-floor front is the oculus – an oval window with a decorative wooden frame.**

***NORTH TEJON STREET***

---



**1229 NORTH TEJON STREET**

**This Victorian Cottage has a full-length wrap-around front porch with round wooden columns and an open railing. A dormer window with a gable roof has fish scale shingles in the gable.**

## ***NORTH TEJON STREET***

---



### **1303 NORTH TEJON STREET**

**This home has a hip roof and a third-floor front-facing dormer with three windows. The partial front porch has rounded wooden columns and is topped with a balconet – a small balcony mainly for decoration. There are modillions (small wooden support strips) under the eaves of the house roof. The front door has sidelights on both sides.**



## *NORTH TEJON STREET*



### **1309 NORTH TEJON STREET**

**This is a full-size home with Craftsman details. Those details include a full-length front porch with square wooden pillars rather than round wooden columns. The ends of the dormer window roof and the front entrance roof are covered by long wooden boards (painted red on this house) called barge boards. Note the slight curvature to the bargeboards. The house was built in 1910 by optometrist George R. Bergen and his wife Nellie. Later George M. LeCrone, the president of the Democrat Publishing Company, lived in it.**

***NORTH TEJON STREET***



**1317 NORTH TEJON STREET**

**This Spanish Mission style home sports adobe-looking exterior walls and a red shingle roof. There is a curvilinear parapet above the second-floor dormer windows.**

## ***NORTH TEJON STREET***

---



### **1323 NORTH TEJON STREET**

**An ornate portion of the façade of this home has a gable roof and “cut corners” with windows on the first floor. Note the intermixture of wood siding and fish scale shingles. There is a partial-length front porch with wooden columns, an open railing, and an open pediment over the entrance. The front door has fanlight windows on both sides.**

## ***NORTH TEJON STREET***

---



### **1327 NORTH TEJON STREET**

**The two front-facing gables give this home an Edwardian look. It could also be called Shingle Style, because almost every surface is covered with wood shingles. There is a front-facing bay window on the first floor. The “wavy” looking shingles in the two front gables are quite unusual.**

***NORTH TEJON STREET***



**1331 NORTH TEJON STREET**

**This home has a front-facing part gable filled with fishscale shingles. The balcony above the front porch is unique because it has its own roof. Paired wooden columns and an open railing characterize both the front porch and the balcony.**

***NORTH TEJON STREET***



**1335 NORTH TEJON STREET**

**This home has a hip roof and a front-facing dormer. Modillions line both the eaves of the house roof and the eaves of the dormer roof. The full-length balcony atop the front porch has an open railing.**

***NORTH TEJON STREET***



**1337 NORTH TEJON STREET**

**The first and second floors of this apartment building are covered with stucco. The squat gable created by the low-pitched roof has been filled with shingles. There is a Victorian-era cast iron fence lining the front yard.**

---

***NORTH TEJON STREET***



**1341 NORTH TEJON STREET**

**An oriel window is a bay window located above the first story of a home. This home has two oriel windows, one on the façade and one on the side. There is also an ornate third-floor dormer window with a gable roof. The front porch has a classical look with its four large-tapered columns.**



***NORTH TEJON STREET***



**1401 NORTH TEJON STREET**

**This modern bungalow is only one-story high and has stucco walls.**

***NORTH TEJON STREET***

---



***1407 NORTH TEJON STREET***

**This Craftsman bungalow has bargeboards lining the ends of the gable-front roof. The bargeboards are supported by large and highly visible wooden brackets. The partial-length front porch has square wooden pillars, in groups of three, supporting the front porch roof. There is a square stone base under each set of three wooden pillars.**

## ***NORTH TEJON STREET***



### **1411 NORTH TEJON STREET**

**Craftsman details can be applied to any size house. This large Craftsman home has bargeboards at the ends of the gable-front roof. Both the Gable Front style and the bargeboards have been applied to the mini-roofs over the second-story front-facing bay windows. The exterior walls have been covered with stucco, but wooden boards have been placed in the stucco to suggest a half-timbered look. The beautiful woodwork around the second-story bay windows is characteristic of Craftsman homes. It is this kind of beautiful woodwork that gave Craftsman homes their name.**

***NORTH TEJON STREET***

---



**1415 NORTH TEJON STREET**

**This Tudor style home has been covered with stucco. The front entrance has been given a half-timbered look with boards inserted amidst the stucco.**

## *NORTH TEJON STREET*



### **1419 NORTH TEJON STREET**

**This is a fine example of a Hip-Dormer home. There is a hip roof with a front-facing dormer. Note the modillions (small pieces of wood) under the eaves of the porch roof, the eaves of the house roof, and the eaves of the dormer roof. Both the extra-length front porch (veranda) and the balcony on the porch roof have open wooden railings. The front porch sports round wooden columns. The third-floor dormer has a hip roof similar to the hip roof on the house. The dormer is unusually large and features an interesting triple window.**

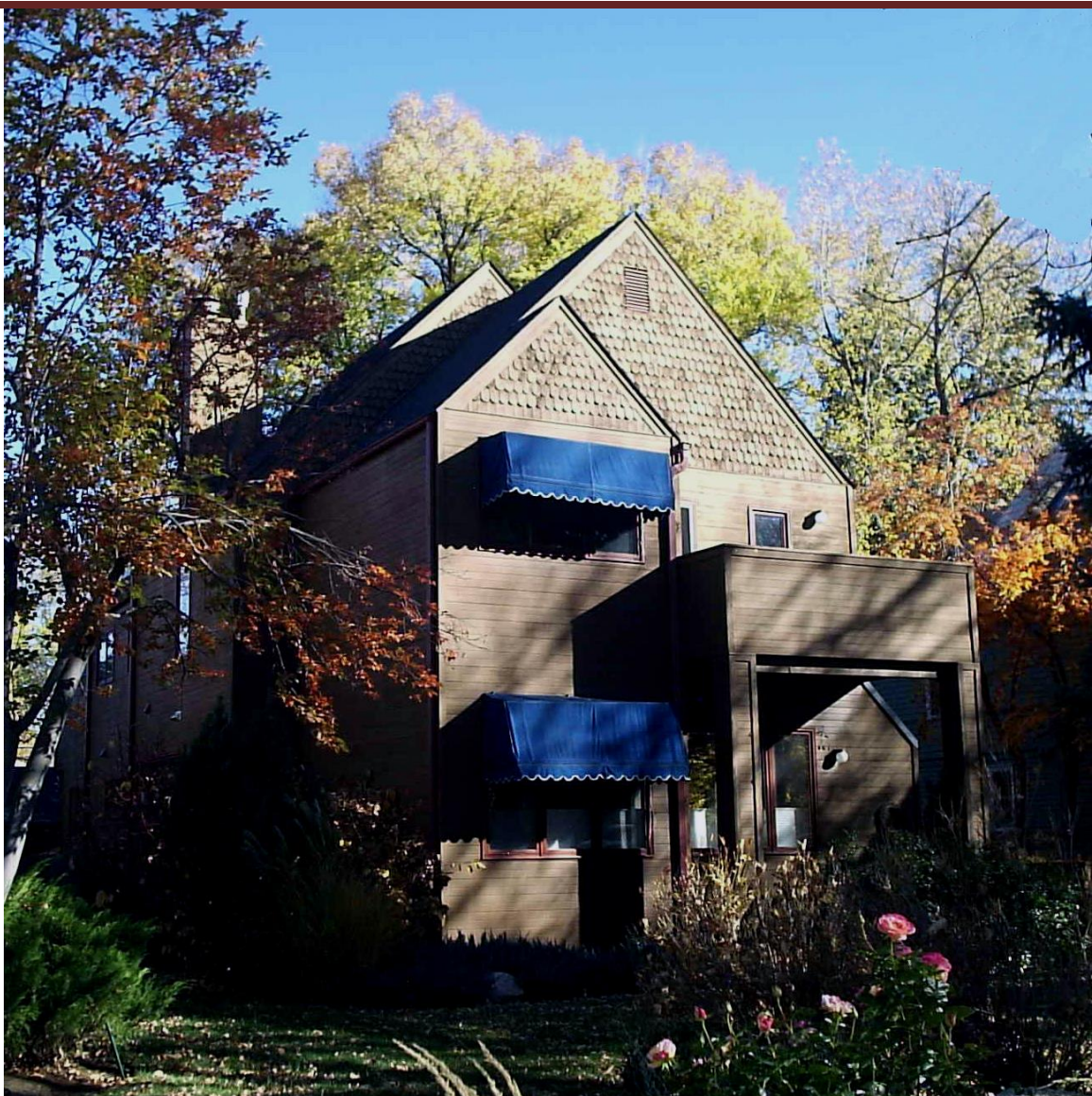
***NORTH TEJON STREET***



**1423 NORTH TEJON STREET**

**This is a classic Gable Front style home. Note the unusual decoration above the windows in the third-floor gable and above the bay window.**

## *NORTH TEJON STREET*



### **1425 NORTH TEJON STREET**

**Architect David Barber designed and built this modern home in the 1970s. He included many features to help it fit into the Old North End. The two gable fronts facing the street are a major design feature, as are the fish scale shingles filling both gables. Wood, the major building material found in older houses in the Old North End, was used extensively on the exterior of the home.**

***NORTH TEJON STREET***

---



**1429 NORTH TEJON STREET**

**The point of the hip roof on this home has been “clipped” off. The third-floor dormer window has a gable roof. The entire house, including the elaborate front porch, has been covered with stucco.**



## *NORTH TEJON STREET*



### **1435 NORTH TEJON STREET**

**This home has modillions under the eaves of the porch roof, the house roof, and the dormer roof. The full-length front porch has paired wooden columns and a closed railing. The porch railing is covered with the same wooden shingles that cover the house. The extra large third-floor dormer has an attractive window in it.**

## *NORTH TEJON STREET*



### **1439 NORTH TEJON STREET**

**This Queen Anne style home has a square tower with a uniquely shaped tower roof. There is a full-length front porch with a pediment over the porch entrance. The exterior walls are covered with an interesting mix of square shingles and fish scale shingles. Colorado College professor of music Carlton Gamer lived in this house in the latter part of the 20<sup>th</sup> Century.**

## ***NORTH TEJON STREET***



### **1501 NORTH TEJON STREET**

**This home has hip roof (clipped) with a front-facing dormer window. A full-length front porch has rounded wooden columns and an open porch railing. There is an open railing on the balcony atop the front porch. There are separately painted modillions under the eaves of the roof.**

***NORTH TEJON STREET***



**1507 NORTH TEJON STREET**

**This home has an interesting front door. The door has sidelight windows on both sides. This Hip-Dormer style was one of the most popular housing styles built in the Old North End at the turn of the 20<sup>th</sup> Century.**

***NORTH TEJON STREET***



**1511 NORTH TEJON STREET**

**The unusual feature of this Gable Front style home is the six small windows in the front gable. Note also the extra-length front porch with a pediment over the porch entrance.**

## *NORTH TEJON STREET*



### **1515 NORTH TEJON STREET**

**This Dutch Colonial home has the characteristic slightly bent rooflines of that style of house. Note that both of the front-facing gables on this house are partially filled with fish scale shingles. The small circular window under the Dutch Colonial roof is unusual and interesting. The house has a partial front porch with a small balcony atop it. There is an authentic cast iron fence enclosing the front yard. Attorney Joseph W. Ady and his wife Louise lived in this house in the early 1900s.**

***NORTH TEJON STREET***



**1519 NORTH TEJON STREET**

**The two roof gables facing the street give this house an Edwardian look. The large arched first-floor front window is a nice touch.**

***NORTH TEJON STREET***



**1523 NORTH TEJON STREET**

**This Queen Anne home sports a Victorian-era round tower with a low pointed roof atop it. Next to the tower is a partial front porch. Notice the exterior walls are covered with stucco on the first floor and wood shingles on the second floor.**



***NORTH TEJON STREET***

---



**1529 NORTH TEJON STREET**

**This is a modern one-story apartment building with two apartments. It is covered with stucco.**

***NORTH TEJON STREET***



**106 EAST CARAMILLO STREET**

**This Chateausque style home recreates the grandeur of a 16<sup>th</sup> Century French chateau. Note the decorative third-floor dormer window.**

***NORTH TEJON STREET***



**1609 NORTH TEJON STREET**

**This Edwardian style home has the customary two front-facing roof gables. Each of the two gables is filled with a window.**

## ***NORTH TEJON STREET***



### **1615 NORTH TEJON STREET**

**This Prairie style home has the clean and undecorated roof eaves characteristic of the Prairie style. Another Prairie characteristic is the low hip roof. In the center of the second-floor front are two small windows with elaborately decorated frames. The full-length front porch has twin columns supporting the porch roof. There is a pediment over the porch entrance.**

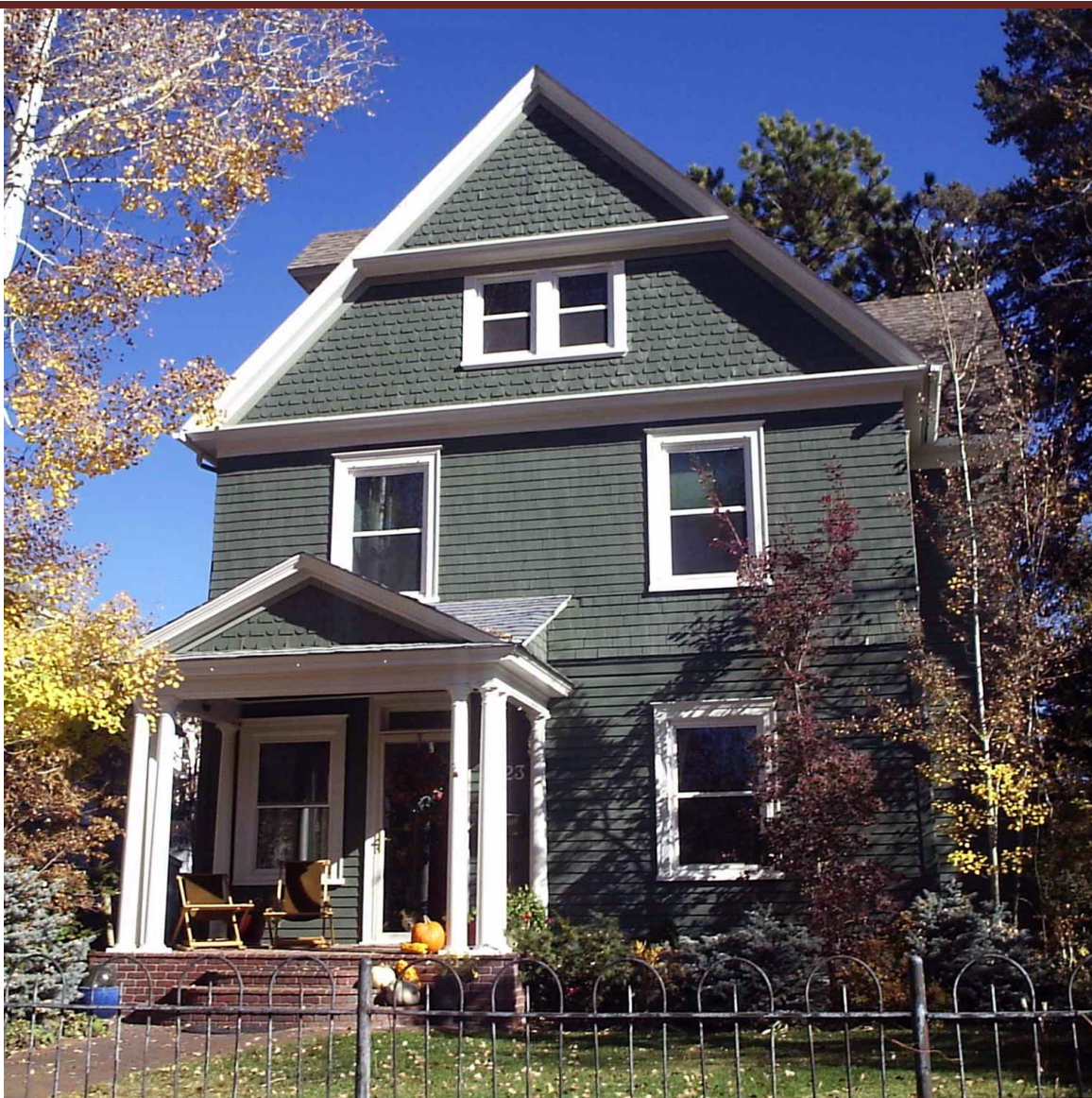
***NORTH TEJON STREET***



**1619 NORTH TEJON STREET**

**A decorated third-floor dormer window with a gable roof, a wooden design over the window, and a balconet distinguishes this home.**

## ***NORTH TEJON STREET***



### **1623 NORTH TEJON STREET**

**This Gable Front design home has an unusual horizontal wooden divider in the gable. Fish scale shingles fill the gable both above and below the wooden divider. The partial-length front porch has two sets of three wooden columns supporting the front of the porch roof. There is a pediment above the entrance to the porch.**

***NORTH TEJON STREET***



**1625 NORTH TEJON STREET**

**This Victorian Cottage is Gable Front style and has unique woodwork over the main entrance. A large bay window (with four individual windows) overlooks the full-length front porch.**

***NORTH TEJON STREET***



**1629 NORTH TEJON STREET**

**This Prairie style home has an oriel window on the second floor front. An oriel window looks like a bay window but is on the second floor with no bay window beneath it. The third-floor dormer window has a hipped roof. The partial front porch has round wooden columns with an open railing.**



***NORTH TEJON STREET***



**106 EAST DEL NORTE STREET**

**This Craftsman home has a front porch where both the square pillars and the railings are made of stone. A small shed-type dormer window is on the roof. For the most part, Craftsman homes are only 1 or 1½ stories high.**

***NORTH TEJON STREET***



**1705 NORTH TEJON STREET**

**This is said to be one of the oldest homes in Colorado Springs. It was moved from the site of the downtown Post Office to this site. It is Italianate, a style identified by long vertical windows and the paired brackets under the eaves of the roof.**

## ***NORTH TEJON STREET***

---



### **1709 NORTH TEJON STREET**

**Instead of a dormer window, this Hip-Dormer home has an “eyebrow” window on the street side of the hip roof. The large group of connected windows at one corner of the second floor was built as a sleeping porch (windows open) for tuberculosis sufferers. The sunny and dry climate in Colorado Springs was thought to be good for persons with lung ailments.**

## *NORTH TEJON STREET*



### **1715 NORTH TEJON STREET**

**That Victorian tower, with a top shaped like a witch's cap, makes this a Queen Anne style home. Note that second floor dormer window opposite the tower with a large gable roof with eave returns. The partial-length front porch is unusual in that most Old North End homes have a full-length front porch. This house has wood siding on the first-floor exterior with fishscale shingles on the second-floor exterior.**

## *NORTH TEJON STREET*



### **1719 NORTH TEJON STREET**

**This Craftsman-style home has a balconette in front of the three second-floor windows. The tripled wooden pillars holding up the front porch roof are interesting. The front porch is built of stone. The closed railing is covered with the same wooden shingles that cover the exterior walls of the house.**

## ***NORTH TEJON STREET***

---



### **1723 NORTH TEJON STREET**

**This home is a Victorian Cottage. It has many of the features of larger Victorian homes but on a smaller scale. It is Gable Front style with a full-length front porch with an open railing. Three adjoining windows – a large one in the middle and two small ones on each side – fill the front gable. On the side there is a bay window on the first floor and a large dormer window on the second floor.**

## ***NORTH TEJON STREET***



### **1725 NORTH TEJON STREET**

**This Craftsman home sports three front-facing gables, one on the front porch and two on the house. The indentations at the ends of the bargeboards (attached to the front-facing ends of the roof) are found on a number of Craftsman houses in the Old North End. The tapered square pillars on the front porch (rather than round columns) are another popular Craftsman feature.**

***NORTH TEJON STREET***



**103 EAST ESPANOLA STREET**

**This Victorian Cottage sports a wrap-around front porch which is rounded at the corner. The house is Gable Front style with a large side gable. It features three adjoining windows in both the front gable and the side gable. There is a pediment in the porch roof above the main entrance to the home.**



## *NORTH TEJON STREET*

---



### **1801 NORTH TEJON STREET**

**This Victorian-era home is highly decorated. The woodwork in the front-facing part-gable is particularly attractive. The part-gable is matched with a dormer. The full-length front porch is supported by paired wooden columns. There are open railings on both the front porch and the balcony above it.**

## *NORTH TEJON STREET*



### **1805 NORTH TEJON STREET**

**This home is very similar to the house next door at 1801 North Tejon Street. It has the highly decorated front-facing part-gable coupled with a dormer window. Instead of a balcony and railing, this home sports a pediment above the entrance to the full-length front porch. In place of rounded columns supporting the front porch roof, it has square wooden pillars.**

## *NORTH TEJON STREET*



### **1809 NORTH TEJON STREET**

**This Victorian Cottage has a gable-front design with a window and fish scale shingles in the front-facing gable. The glassed-in front porch has a pediment over the front entrance. The side of the home features a shed-type dormer window (three windows in a row) on the second floor and a bay window on the first floor. For many years this was the home of Colorado College political science professor Fred Sonderman and his wife Marion. Fred Sonderman served as a Colorado Springs city councilman, and Marion was on the District 11 School Board. Sonderman Park in west Colorado Spring was named for Fred Sonderman.**

---

## ***NORTH TEJON STREET***

---



### **1815 NORTH TEJON STREET**

**This is a Prairie-style home. It has the undecorated eaves of the roof associated with the Prairie form. Another Prairie characteristic is the low hip roof with a front-facing dormer window. The full-length front porch has paired wooden columns. The front porch roof doubles as a balcony with an open railing. The solid wooden blocks under the paired porch columns are a nice touch.**

***NORTH TEJON STREET***

---



**1819 NORTH TEJON STREET**

**The front-facing large bay window on the first floor is a notable feature of this home. The hip roof has a gable-roofed dormer window, which is offset to one side. Open railings decorate both the full-length front porch and the balcony above it.**

***NORTH TEJON STREET***

---



**1821 NORTH TEJON STREET**

**This Gable-Front bungalow has been covered with stucco. Vertical boards combined with the stucco give it a half-timbered look. The gable roof is matched with the large pediment over the front entrance. Square pillars, doubled at the corners, support the porch roof.**

## ***NORTH TEJON STREET***

---



### **1831 NORTH TEJON STREET**

**This Prairie home has the typical very plain eaves of the roof. An unusual feature for a house such as this is the tall stone pillars located at the corners of the full-length front porch. The stone pillars reach all the way up to the balcony on the porch roof. The stone in the porch pillars matches the stone in the chimney. The dormer coming out of the low hip roof has three attractive arched windows.**

## ***NORTH TEJON STREET***



### **1903 NORTH TEJON STREET**

**This Hip-Dormer home has modillions – short pieces of wood – supporting the eaves of the roof. The hip roof has a dormer window popping out of it, and the dormer window has a hip roof of its own. Round columns, rather than square pillars, support the porch roof. The real treasure on this home is the oculus, the oval window on the second-story front with an elaborate circular wooden frame.**



***NORTH TEJON STREET***

---



***1907 NORTH TEJON STREET***

**Modillions under the eaves of the roof and the eaves of the third-floor dormer window characterize this home. Note also the open railings on the front porch and on the balcony atop the front porch. There are sidelight windows on both sides of the front door.**

## ***NORTH TEJON STREET***

---



### **1915 NORTH TEJON STREET**

**This is a classic Craftsman bungalow. It is one and one-half stories high and has a front gable (with two windows) facing the street. Wooden brackets supporting the eaves of the roof are clearly visible. There are square pillars (not round columns) holding up the porch ceiling. The base of the porch is built of stone. The name Craftsman comes from a magazine that avidly promoted this housing style in the 1920 and 1930s.**

***NORTH TEJON STREET***



**1919 NORTH TEJON STREET**

**This is a classic Gable Front bungalow. There is a triple window in the gable front and a partial front porch. The front porch railing is closed and covered with the same wooden siding as the house.**

## ***NORTH TEJON STREET***



### **1923 NORTH TEJON STREET**

**This photograph illustrates an important point about bungalows. They can appear small from the street, but they can go back a long way on the lot and thus are quite roomy housing. This one also has a large addition added at the back. On the second floor, large dormer windows create nice-sized bedrooms. Check out the fish scale shingles in the front gable painted three different colors.**

***NORTH TEJON STREET***



**1927 NORTH TEJON STREET**

**This bungalow has a small dormer window popping out of the roof. It also has a partial front porch with a closed railing. An authentic old cast iron fence encloses the front yard.**

***NORTH TEJON STREET***

---



**1931 NORTH TEJON STREET**

**This bungalow has a modernized full-length front porch with metal pillars supporting the porch roof. A small dormer window peeks out from the roof.**

## ***NORTH TEJON STREET***



### **2003 NORTH TEJON STREET**

**This is a classic Gable-Front style of home. The full-length front porch has an open railing and round wooden columns supporting the porch roof. A triple window fills the front gable. A nice touch on the side of the house is the second-floor bay window supporting a third-floor balcony with a decorative railing. The front door has sidelights.**

***NORTH TEJON STREET***



**2007 NORTH TEJON STREET**

**This Gable-Front style home has a triple window in the front gable as well as “wavy” shingles. On the side of the house, a two-story bay window is topped with a small balcony with an open railing.**



## ***NORTH TEJON STREET***

---



### **2011 NORTH TEJON STREET**

**This bungalow has a full-length front porch with an arcade effect. The arched openings suggest a Spanish arcaded look. The front porch has a closed railing covered with wooden shingles. An interesting feature is the square pillars supporting the porch roof that are also covered with wooden shingles. Houses such as this where every vertical surface is covered with shingles are often called Shingle Style.**

***NORTH TEJON STREET***



**2015 NORTH TEJON STREET**

**This is a part-gable home with a unique looking shingle in the part gable. There is a full-length front porch with an open railing and round wooden columns. On the side of the house (the sunny side) is a two-story bay window.**

## ***NORTH TEJON STREET***

---



### **2017 NORTH TEJON STREET**

**This is a Craftsman bungalow. A dormer with double windows pokes out of the roof. The dormer is decorated with bargeboards (long boards covering the ends of the dormer roof) that come to a point. The small yet full-length front porch is elaborately decorated with slanting square wooden pillars that are also partially covered with shingles (top and bottom). The closed porch railing is covered with shingles. Note the sidelights on the front door. This is a very attractive and unique treatment of a front porch.**

***NORTH TEJON STREET***

---



**2027 NORTH TEJON STREET**

**This home has the smooth and uncluttered roof eaves, the low hip roof, and the third-floor front-facing dormer window characteristic of the Prairie style. In the late 20<sup>th</sup> and the early 21<sup>st</sup> centuries, it was the longtime home of Linda and Matt Railey.**

***NORTH TEJON STREET***

---



**2029 NORTH TEJON STREET**

**This bungalow has a full-length front porch made of rock. The same rock was used to build the square bases for the square wooden pillars. The same rock also was used for the chimney.**

***NORTH TEJON STREET***



***102 EAST JEFFERSON STREET***

**The elaborate front door is the interesting feature on this bungalow. It has sidelights on both sides of the front door with a pediment on top.**

## *NORTH TEJON STREET*



### **2111 NORTH TEJON STREET**

**The front porch distinguishes this bungalow. There are twin wooden columns on each side of the porch with a large gable for the porch roof. The front porch thus has a classical look. The house exterior walls have been covered with stucco. It is interesting that the two dormers on either side of the roof contain ventilators rather than windows.**

***NORTH TEJON STREET***



**2115 NORTH TEJON STREET**

**All the exterior walls of this bungalow have been covered with stucco. The stucco extends to the porch railings and the bases under the square wooden porch pillars.**



## *NORTH TEJON STREET*



### **ZAY HOUSE AT PENROSE HOSPITAL – ONE**

**The three houses at the north end of the east side of the 2100 block of North Tejon Street have been combined to form Zay House. The three houses are used by Penrose Hospital to provide lodgings for the families of children from out-of-town undergoing medical operations at the hospital. This bungalow was a private home before Penrose Hospital acquired it for Zay House. Note how the wood siding on the first-floor exterior walls of the house contrasts with the wooden shingles used in the front gable.**

***NORTH TEJON STREET***

---



**ZAY HOUSE AT PENROSE HOSPITAL – TWO**

**This is the middle house of the three houses that compose Zay House at Penrose Hospital. The hospital is located across the street (East Madison Street) from these three properties.**

***NORTH TEJON STREET***



***ZAY HOUSE AT PENROSE HOSPITAL – THREE***

**This is the main structure composing Zay House at Penrose Hospital. It was built new and intentionally designed to match the Victorian architecture of the Old North End. The Old North End Neighborhood (homeowner’s association) approved the architectural design. The hospital’s main campus is across the street to the left of this photograph.**

***NORTH TEJON STREET***

---

**WEST SIDE**

**EVEN NUMBERS**

**1204 TO 2128**

**NORTH TEJON**

**STREET**

***NORTH TEJON STREET***

---

## *NORTH TEJON STREET*



### **30 EAST UINTAH STREET**

**The first home on North Tejon Street in the Old North End faces on East Uintah Street. It is a Gable Front style house with “wavy” looking wooden shingles at the very top of the gable front. The remaining exterior walls of the second and third floors are covered with an unusual wooden “offset” square shingle. The first-floor exterior walls sport regular wooden square shingles. There is a large bay window on the first floor next to a small front porch with a triangular-shaped pediment above it. There is interesting decoration inside the pediment.**

## ***NORTH TEJON STREET***



### **1210 NORTH TEJON STREET**

**This Queen Anne style home has the extra decoration characteristic of the Queen Anne style. In this case the extra decoration is the beautiful two-story Victorian-era tower. The tower is topped by a witch's hat, a pointed cone-shaped roof covered with shingles. At the top of the witch's hat is an interesting metal finial.**



***NORTH TEJON STREET***



**1216 NORTH TEJON STREET**

**The hip roof and the front-facing dormer window characterize this home. The full-length front porch has a balcony on the front porch roof. Both the front porch and the balcony have matching open railings. Note the modillions (visible wood supports under the eaves of the roof).**

***NORTH TEJON STREET***



**1220 NORTH TEJON STREET**

**This home has an extra-long full-length front porch with wooden columns supporting the porch roof and an open railing. The second-story facade sports a balcony with an elaborate cover and a large oriel window. Up above the second-story oriel window on the third story is a small dormer window with a large gable roof.**

***NORTH TEJON STREET***



**1224 NORTH TEJON STREET**

**The hipped roof on this home sports a part gable as well as a small front-facing dormer window. The gable roof on the dormer window matches the part gable on the house roof. The large pediment, supported by its own wooden columns, decorates the front entrance to the house.**

***NORTH TEJON STREET***



**1226 NORTH TEJON STREET**

**This Victorian cottage has a full-length front porch with a circle at one end. Another interesting feature is the high pediment over the front entrance.**

***NORTH TEJON STREET***

---



**1230 NORTH TEJON STREET**

**This Victorian cottage has a hip roof with a double-windowed front-facing dormer. The wooden columns holding up the full-length front-porch roof are paired. The porch railing is closed.**

## ***NORTH TEJON STREET***



### **1304 NORTH TEJON STREET**

**This Craftsman bungalow has been covered with stucco. Bargeboards line the ends of the roofs of the dormer window, the house itself, and the front porch. Exposed rafter tails are visible on the long side of the house roof. An unusual feature is the Dutch Colonial porch roof (with the Dutch Colonial slight bends in the rooflines). The front porch roof is supported by squat square wooden pillars sitting on square brick supports. This bungalow is a good example of the main elements of the Craftsman style.**

***NORTH TEJON STREET***

---



**1312 NORTH TEJON STREET**

**Here is a classic example of a Victorian home with a hip roof and a front-facing dormer window. The exterior walls are covered with wood siding. The balcony on the front-porch roof has an open railing, but the full-length front porch has a closed railing (covered with the same wood siding as the exterior walls).**

## ***NORTH TEJON STREET***

---



### **1314 NORTH TEJON STREET**

**This house is a rarity in the Old North End. It is a 2½ stories high Craftsman home. Most Craftsman houses are only 1 to 1½ stories high. The home has many of the Craftsman touches: Double-gables – one on the house and a second on the front porch. Wooden brackets under the eaves of the gabled house roof and the gabled porch roof. A stone porch with square wooden pillars holding up the porch roof. There is a double-windowed shed dormer popping out of the third-floor roof.**



## ***NORTH TEJON STREET***



### **1320 NORTH TEJON STREET**

**This highly decorated Victorian home has a first-floor bay window topped with a second-floor bay window topped with a third-floor gable with a small window. Open railings on both the front porch and the second-floor balcony are complimented by the wooden columns supporting the balcony.**

## ***NORTH TEJON STREET***



### **1324 NORTH TEJON STREET**

**This Craftsman bungalow has brackets (painted white) supporting the eaves of the gable-front roof. The front porch also has a gable-front design with its own brackets. Other characteristics of a Craftsman home are the square pillars and the closed railing on the front porch.**

***NORTH TEJON STREET***

---



**1328 NORTH TEJON STREET**

**This Dutch Colonial home has three windows with gable-shaped coverings on the second-floor front. There is a partial front porch with square pillars and a large pediment. The bay windows on both sides of the first floor give a well-balanced look to this house, as do the matched sidelights on both sides of the front door.**

***NORTH TEJON STREET***



**1332 NORTH TEJON STREET**

**This simple Craftsman bungalow has the roof brackets that typify that housing style. The “double-gable” look also characterizes this home, with one front gable for the house and a second front gable for the front porch. The dormer windows on the roof are called “shed dormers” because of their wide flat roofs.**

## ***NORTH TEJON STREET***

---



### **1336 NORTH TEJON STREET**

**The hip roof with a double-windowed dormer distinguishes this home. A decorative touch is the slight slant in the corners of the dormer where it meets the roof. The plain flat surfaces under the eaves of the roof make this a Prairie style home. The balcony on the full-length front-porch roof has an open railing. On the front porch itself, the railing is closed.**

***NORTH TEJON STREET***



**1340 NORTH TEJON STREET**

**This Craftsman bungalow has a “gable-front” front porch. The square wooden pillars holding up the front-porch roof are a mark of the Craftsman style, as is the closed front-porch railing.**

## *NORTH TEJON STREET*



### **1402 NORTH TEJON STREET**

**This two-story tower has the front porch of the house attached to it. This is proof that Victorian towers can be located at any part of the house. There is a small finial at the top of the conical witch's hat on top of the tower. This is a double house or twin-home. There is another tower and front porch, in a reversed design, on the other side of the home (see next page).**

***NORTH TEJON STREET***



**1402 NORTH TEJON STREET  
(CONTINUED)**

**The twin towers can be enjoyed in this view of the house. Note that each of the two homes in this unique Victorian duplex has its own covered entrance right next to its tower. The address of the home on the left is 30 East Columbia Street.**



***NORTH TEJON STREET***



**1410 NORTH TEJON STREET**

**This two-story tower is nicely separated from the main body of the house and thus stands out in appearance. The witch's hat roof has vertical lines of shingles merging into a decorative finial on top. The eaves of the tower roof connect nicely to the eaves of the house roof.**

## *NORTH TEJON STREET*



### **1414 NORTH TEJON STREET**

**An elaborate pair of dormer windows in the hip roof is a distinguishing feature of this Hip Dormer home. Most houses of this style only have a single centered dormer window rather than a pair. The larger dormer window sports a gable roof, a semi-circular window top, and a balconette (small balcony). The small dormer window has a pediment above the window that matches the pediment above the front porch entrance. The porch railing matches the balconette railing.**

***NORTH TEJON STREET***



**1418 NORTH TEJON STREET**

**This square tower is built into the corner of the house. It has an attractive finial on top. Note the pediment over the front entrance. The witch's hat atop the square tower is square rather than rounded.**

*NORTH TEJON STREET*



**1422 NORTH TEJON STREET**

**This house has a hip roof with a part-gable facing the street. A squared-off version of a Palladian window occupies the front of the part-gable. There is an open railing on the balcony above the full-length front porch. A closed railing supports the wooden columns holding up the front-porch roof.**

## ***NORTH TEJON STREET***



### **1424 NORTH TEJON STREET**

**This is a typical Gable Front style home. The front door has sidelights. The railing on the wrap-around front porch is enclosed with shingles that match the walls of the house. This home was built about 1890. A longtime resident was Ira Harris, a former mayor of Colorado Springs and a district court judge.**

***NORTH TEJON STREET***



**1428 NORTH TEJON STREET**

**A pair of front gables distinguish this cottage.**

***NORTH TEJON STREET***



**1432 NORTH TEJON STREET**

**This Prairie style home has the typical low hipped roof. The front porch has been enclosed to add living space.**

***NORTH TEJON STREET***

---



**30 EAST BUENA VENTURA STREET**

**This Dutch Colonial home is distinguished by its angled roof lines. Note that the lower section of the roof serves as the exterior wall for the second story. A nice touch here is that the flat roofs of the second story dormer windows connect directly to the main section of roof on top of the house.**



## *NORTH TEJON STREET*

---



### **1512 NORTH TEJON STREET**

**This home has a hip roof with a partial front gable and a partial front porch below it. The most unusual feature is the double window bay window on the first-floor front. The bay window creates an “indented” window at the corner of the house. The wooden columns on the front porch have been turned on a lathe to add decoration.**

***NORTH TEJON STREET***



**1516 NORTH TEJON STREET**

**This home has a hip roof with a double windowed dormer on the front side. It has a decorative wooden emblem on the second-floor façade which is an oval with the four points of the compass. It has a full-length front porch with a triangular pediment over the front entrance. The first-floor walls are covered with wooden siding and the second-floor walls with wooden shingles.**

*NORTH TEJON STREET*



**1520 NORTH TEJON STREET**

**A full-length front porch with a circle at one end – topped by a witch’s cap roof – is the significant feature of this home. There is a nice finial atop the witch’s cap. Note also the balcony over the front entrance with an open railing. Fish scale wooden shingles fill the front gable. The Old North End neighborhood organization had to fight to keep this house from being torn down and turned into an institutional parking lot.**

---

***NORTH TEJON STREET***

---



**1524 NORTH TEJON STREET**

**This building was Paul’s Flower Shop for many years. It was purchased by the neighboring First Lutheran Church and extensively remodeled into a large meeting room called Luther Hall. The remodeling, particularly the roof brackets on the front side and the ventilators on the roof, made the building fit better into the neighborhood.**

## ***NORTH TEJON STREET***

---



### **1528 NORTH TEJON STREET**

**This was a small grocery store named Babe's Market. The owner sponsored a neighborhood adult women's soccer team that was called Babe's Babes. The store was popular in the neighborhood, particularly with school children stopping by to get ice cream or candy. After Babe's Market went out of business, the building was remodeled into a small office center. The half-timbering marks it as Tudor style.**

***NORTH TEJON STREET***

---



**1530 NORTH TEJON STREET**

**This Gable Front home has a double window at the top of the front gable on the third floor. The front door is nicely decorated with sidelights and a small wooden pediment over the door. The front porch has been enclosed to add more living space.**

## *NORTH TEJON STREET*

---



### **1604 NORTH TEJON STREET**

**This Gable Front home has an interesting tri-window at the top of the front gable. The partial length enclosed porch has a pediment in the front porch roof. On the side of the house is a feature found throughout the Old North End. A bay window on the first floor is topped by a bay window on the second floor.**

***NORTH TEJON STREET***



**1608 NORTH TEJON STREET**

**This home has the hip roof with a dormer window on the third-floor front. The glassed-in full-length front porch has an enclosed railing with the same wood siding found on the house proper. A pediment decorates the front porch roof over the main entrance.**



***NORTH TEJON STREET***



**1612 NORTH TEJON STREET**

**A partial gable emerges from the roof of this home. The gable is filled with fish scale shingles. The full-length front porch has been glassed-in. There is a pediment over the front entrance.**

*NORTH TEJON STREET*



**1614 NORTH TEJON STREET**

**This Gable Front home has a dramatic overhang at the top of the front gable. The overhang is covered with regular square shingles, while below the overhang has fish scale shingles. The full-length front porch is well-decorated. The wooden columns have been turned on a lathe. There is interesting woodwork where the columns meet the porch roof. Note the woodwork under the pediment in the porch roof.**

***NORTH TEJON STREET***

---



**1624 NORTH TEJON STREET**

**This home has a hip roof with a double window in the front-facing dormer. The balcony atop the front porch roof has an open railing, as does the front porch below. There are paired wooden columns on the front porch.**

## ***NORTH TEJON STREET***

---



### **1628 NORTH TEJON STREET**

**This is one of the most frequently seen house types in the Old North End. The hip roof has a front-facing dormer window. The full-length front porch has widely paired wooden columns atop a closed railing. The closed railing is covered by the same wooden shingles that cover the exterior walls of the house.**

***NORTH TEJON STREET***



**1632 NORTH TEJON STREET**

**This home has the familiar hip roof with a front-facing dormer window. The elaborate hip roof on the dormer window matches the hip roof on the house. There is a large partial-length front porch with a balcony on top.**

## *NORTH TEJON STREET*



### **1704 NORTH TEJON STREET**

**This is a side view of a Victorian Cottage. Its features include an oval window on the first floor and a small circular window on the second floor. There is a side gable with the top of the gable filled with fish scale shingles painted in a variety of colors. A bay window is on the first floor, and the wrap-around porch has a closed railing covered with the same shingles as the house. The wooden columns on the porch are tapered at both ends.**

## ***NORTH TEJON STREET***



### **1708 NORTH TEJON STREET**

**This Victorian Cottage has a partial gable facing the street and to the side. The front porch has an open railing. At the right rear is a many windowed tuberculosis porch where a member of the family could sleep with all the windows wide open. It was believed the cold fresh air would cure lung ailments. Because Colorado Springs was a center for treating tuberculosis, many homes in the Old North End have these tuberculosis porches.**

## *NORTH TEJON STREET*



### **1712 NORTH TEJON STREET**

**This Gable Front home has room on the third floor for three bedrooms. A roomy third floor is one of the characteristics of the Gable Front design. The front gable is filled with a Palladian Window. That is two smaller windows on both sides of a larger window, which has a semi-circular top. There are similar Palladian Windows throughout the Old North End. This home was built in 1902. In its early years it was occupied by a coalmine owner, a laundry owner, and a truck manufacturing plant owner. From 1932 to 1950 the home was the family residence of an editor of the Gazette-Telegraph newspaper.**



## ***NORTH TEJON STREET***

---



### **1714 NORTH TEJON STREET**

**This home features a cross-gable roof. Its most notable feature is the full-length front porch with square pillars, open railings, and a pediment over the main entrance. A decorative addition is the balcony atop the porch roof with an open railing that matches the porch railing. A medical doctor, John Strong, and his wife, Margaret, lived in this home during the last half of the 20<sup>th</sup> Century.**

***NORTH TEJON STREET***



**1718 NORTH TEJON STREET**

**This home has the characteristic hip roof with dormer windows, one on the front and one on the side. An exciting feature is the balcony atop the full-length front porch with an open railing around it. Also interesting are the triple wooden columns at each corner of the front porch. Note that the balcony railing is “tripled” at the corners as well.**

## ***NORTH TEJON STREET***



### **1724 NORTH TEJON STREET**

**This home has a decorative dormer window on the roof section facing the street. The dormer has a hip roof, just as the house does, and the dormer has modillions in the eaves of its roof just as the house does. Modillions are wooden strips that add support and decoration under the eaves of a roof. The walls of the dormer window are covered with shingles while the house walls are wood siding. A full-size door leads out to the balcony atop the full-length front porch. This was the longtime home in the late 20<sup>th</sup> Century of Jim Tristle, an art professor at Colorado College.**

***NORTH TEJON STREET***



**1726 NORTH TEJON STREET**

**This home has a large third-floor dormer with three windows in it. There is a full-length front porch with a closed railing. On the side of the house is a first-floor bay window.**

## ***NORTH TEJON STREET***



### **1732 NORTH TEJON STREET**

**This home sports an elaborate full-length front porch with a balcony above enclosed by an open railing. There is a wide oriel window on the second-floor front. An unusual feature is on the side. The house widens, at both the first-floor level and second-floor level, to create interior space that is well-lighted with many windows.**

## *NORTH TEJON STREET*



### **1804 NORTH TEJON STREET**

**This large home has a hipped roof with dormer windows both in front and on the side. There is an oriel window on the second-floor front and a two-story bay window on the side. The eaves of the roof are supported by modillions. There is that hallmark of many Old North End homes – the full-length front porch, this one with wooden columns and an open railing.**

***NORTH TEJON STREET***



**1806 NORTH TEJON STREET**

**This Mediterranean-style home is distinguished by the full-length arched front porch with four arches. A unique feature is the way the two front-facing dormer windows on the second floor have been connected to form a single series of windows.**

## *NORTH TEJON STREET*

---



### **1814 NORTH TEJON STREET**

**This large home is quite unique. There is a full-length front porch built of stone rather than wood. An interesting feature is the front-facing second-floor balconette with a cast-iron railing. Also interesting is the way the stone front porch has been extended to create a stone wall along the left side of the home.**



***NORTH TEJON STREET***



***1820 NORTH TEJON STREET***

**This home has the customary dormer window jutting out of a hip roof. There are modillions under the eaves of the roof. The attractive full-length front porch has round wooden columns and an open railing. There is extra decoration on the railing that encloses the balcony atop the front porch.**

***NORTH TEJON STREET***

---



**1824 NORTH TEJON STREET**

**This Gable Front cottage has a stone front porch with a cast iron railing. There is a pediment over the front door, and decorative French windows open on to the front porch. The side of the home sports a one-story bay window.**

## *NORTH TEJON STREET*



### **1828 NORTH TEJON STREET**

**This Victorian cottage is only one-and-a-half stories high but has many of the decorative features found on larger Victorian homes. There is a hip roof with both front and side dormer windows rising out of it. The full-length front porch is distinguished by circular wooden columns and an open railing. Modillions grace both the eaves of the roof and the front porch roof. The side of the home features a one-story bay window with a double window in the middle. Very unique is the four-window dormer on the roof on the side of the house, which relates to the two-window front dormer.**

## ***NORTH TEJON STREET***



### **1908 NORTH TEJON STREET**

**This bungalow has a gable front that is filled with half-timbering. The decorative window at the center of the gable front is interesting. The full-length front porch has square wooden pillars and an open railing. After the gold mining boom ended at Cripple Creek and Victor, empty lots in the Old North End were often filled with smaller and less expensive bungalows. They extend back on the lot, however, and often contain more living space than one might expect.**

***NORTH TEJON STREET***

---



**1912 NORTH TEJON STREET**

**This gable front bungalow is characterized by interesting window placements.**

## ***NORTH TEJON STREET***

---



### **1918 NORTH TEJON STREET**

**This home is Dutch Colonial because of the bend in the rooflines. It has a large wraparound porch with paired wooden columns and a closed railing. The closed railing is covered with the same shingles as the house. Modillions are plentiful under the eaves of the roof, the dormer windows, and the front porch. The top of an interesting cast iron fence is in the foreground.**

## *NORTH TEJON STREET*



### **1924 NORTH TEJON STREET**

**The large wraparound front porch is the dramatic feature of this home with a cross gabled roof. Note there is a clipped angle on the porch that does not follow the shape of the house. The porch sports wooden columns with an open railing with a pediment over the main entrance. The home is covered with square wooden shingles, but fish-scale shingles were used in the upper parts of the gable fronts and the pediment. The grey colored asphalt shingles on the roof resemble a weathered wooden shingle roof. There is an excellent cast iron fence enclosing the front yard.**

***NORTH TEJON STREET***



**1928 NORTH TEJON STREET**

**This Victorian Cottage has a full-length front porch with wooden columns and an enclosed railing. The square wooden shingles on the home are the same shingles that enclose the porch railing. A one-story bay window is at the side of the house.**



***NORTH TEJON STREET***

---



***1932 NORTH TEJON STREET***

**This one-story bungalow has a partial front porch with square wooden pillars. The front porch stairs have cast iron railings.**

## *NORTH TEJON STREET*



### **2008 NORTH TEJON STREET**

**This Victorian Cottage has a gable front design with a large dormer window on the side of the roof. The dormer has a gabled roof similar to the house. There is a partial length front porch with wooden columns and an open railing. A pediment on the porch roof rises above the main entrance. The home is covered with square wooden shingles, but fish scale shingles can be found in the gable front, the dormer window gable, and the pediment. A one-story bay window graces the side of the house.**

***NORTH TEJON STREET***

---



***2012 NORTH TEJON STREET***

**This gable front bungalow has a partial front porch and a first-floor bay window on the side.**

***NORTH TEJON STREET***

---



**2016 NORTH TEJON STREET**

**This house has a clipped gable front and a cross gable roof. The horizontal siding on the first floor contrasts with the square shingles on the second floor.**

## *NORTH TEJON STREET*



### **2020 NORTH TEJON STREET**

**This home has the typical hip roof with a dormer window popping out of it. A special feature is the elaborate extension of the front porch that covers the front steps. The front porch extension is topped by a large pediment. The extension has many of the design characteristic found on the house, such as wood siding (in the pediment) and modillions under the eaves of the roof. There is an oriel window on the second-floor front, and the front porch roof serves as a balcony with an open railing.**

***NORTH TEJON STREET***



***2030 NORTH TEJON STREET***

**This bungalow has a partial front porch with wooden columns and an open railing. There is a pediment above the main entrance. The internal design in the pediment matches the design of the window in the front-facing gable.**

***NORTH TEJON STREET***

---



**2104 NORTH TEJON STREET**

**This Victorian cottage has a partial front porch and a double-windowed dormer on the second-floor front. The finely detailed decoration on the front porch open railing is called spindle work because it was shaped on a spinning lathe.**

## ***NORTH TEJON STREET***



### **2106 NORTH TEJON STREET**

**This Victorian cottage has a touch of the Edwardian with its double front gables, one larger than the other. There is marvelous detailing on the front porch, particularly in the unusual design of the open porch railing. There are two sets of paired wooden columns holding up the front porch roof, and there is interesting detailing at the tops of the porch columns. A large dormer window with a gable roof looks out from the side roof of the house.**



***NORTH TEJON STREET***

---



**2112 NORTH TEJON STREET**

**This is a Craftsman bungalow. It has a full-length front porch, which is covered by the second floor of the home. Large wooden brackets hold up the overhanging eaves of the roof. The roof has a low pitch to it. Square wooden pillars (rather than round wooden columns) hold up the porch roof. The porch railings are closed and covered with stucco.**

***NORTH TEJON STREET***

---



**2116 NORTH TEJON STREET**

**This is an expanded version of the home next door at 2112 North Tejon Street. The second floor is larger as are the two front-facing second-floor windows.**

***NORTH TEJON STREET***

---



**2118 NORTH TEJON STREET**

**The front porch roof on this bungalow is held up with tapered square wooden pillars. The closed front porch railing is built of stone.**

***NORTH TEJON STREET***

---



**2122 NORTH TEJON STREET**

**This home is similar to the one next door at 2118 North Tejon Street. Notice that the low hip roof on the front porch matches the low hip roof on the house.**

***NORTH TEJON STREET***

---



**2132 NORTH TEJON STREET**

**This is a typical small bungalow. It has a full-length front porch with an open iron railing. Notice the low-arch decoration over the front door.**

***NORTH TEJON STREET***

---

***NORTH TEJON STREET***

---

***NORTH TEJON STREET***

---