

COLORADO COUNTY COURT HOUSES

**A PHOTO ALBUM ASSEMBLED
BY ROBERT D. LOEVY**

2020

COLORADO COUNTY COURT HOUSES BY CATEGORY

VICTORIAN ERA (17)

Arapahoe	Bent	Cheyenne	Conejos ¹	Costilla
Dolores ²	El Paso ³	Gilpin	Huerfano	Logan
Ouray	Park ⁴	Pitkin	San Juan	San Miguel
Summit	Washington			

CLASSICAL (11)

Adams ⁵	Baca	Denver	Jackson	Las Animas
Lincoln ⁶	Mesa	Montrose	Pueblo	Saguache
Weld				

ROMANESQUE (3)

Custer	Elbert	Teller
--------	--------	--------

¹ Destroyed by fire.

² Repurposed as Rico City Hall.

³ Repurposed as Pioneers Museum.

⁴ Repurposed as library.

⁵ Repurposed as Brighton City Hall.

⁶ Dismantled with entrance columns preserved.

ART DECO (13)

Boulder
Montezuma
Rio Grande

Chaffee
Morgan
Routt

Eagle
Phillips
Sedgwick

Garfield
Prowers

Grand
Rio Blanco

MODERN (15)

Archuleta
Fremont
La Plata

Broomfield
Jefferson
Larimer

Clear Creek
Kiowa
Moffat

Delta
Kit Carson
Otero

Douglas
Lake
Yuma

ECLECTIC (5)

Alamosa

Crowley

Gunnison

Hinsdale

Mineral

AN ESSAY ON COLORADO COUNTY COURT HOUSES

Colorado is divided into 64 counties, but there are many more than 64 court house type buildings in the state. Population growth in the various counties over the years has been very uneven, with the populous counties now usually requiring more than one building to handle a vast array of county government functions. In a number of rural counties with low population growth, however, picturesque Victorian era court houses have survived basically untouched to the present day.

Colorado's court houses fall naturally into five categories – Victorian, Classical, Romanesque, Art Deco, Modern, and Eclectic. Be advised that some Colorado court houses have architectural elements from more than one category.

Victorian Era. Any court house decorated with towers and/or a cupola can be labeled Victorian. These court houses were built in Colorado between 1861 and 1911, the last years of Queen Victoria's reign in Great Britain. Usually when people think of historic court houses, they have the Victorian style in mind. Of Colorado's 64 counties, 17 have a court house that fits the Victorian mode. That is more than ¼ of the total. Excellent examples are the Bent County (county seat Las Animas) court house in southeastern Colorado, the Pitkin County (Aspen) court house in the central mountains, and the San Miguel County (Telluride) court house in southwestern Colorado.

One beautiful Victorian court house in Colorado – Conejos County (Conejos) court house – was destroyed by fire and replaced with a modern building. In El Paso County (Colorado Springs) and Park County (Fairplay), Victorian court houses have been “retired” and repurposed. El Paso County’s old court house is now the Pioneers Museum. Park County’s former court house is the public library.

In Dolores County (Dove Creek), when the county seat was moved to Dove Creek, the Victorian court house back in Rico was turned into the Rico city hall. In Adams County (Brighton) in the Denver metropolitan area, the former Victorian court house is now the Brighton city hall.

Classical. Seven Colorado court houses resemble Greek temples, a style that is popular with U.S. Government buildings in the nation’s capital of Washington, D.C. Rows of round columns, often topped with triangle-shaped pediments, are the major characteristic of this type of county court house. If it looks something like the Parthenon in Athens, it is Classical.

A straight-forward expression of the Classic Revival style can be found in rural Jackson County (Walden). Four columns topped with a pediment grace the front entrance of the building. More elaborate Classical court houses, with long rows of columns, are in Denver City and County (Denver), Pueblo County (Pueblo), and Weld County (Greeley).

Romanesque. When you see arched windows or arched doorways, think Romanesque. Good examples can be found in Elbert County (Elizabeth), Custer County (Westcliff), and Teller County (Cripple Creek).

Art Deco. This style of court house became popular in the first half of the 20th century. Art Deco court houses are square or rectangular in shape and are two or three stories high. They are very plain and functional in overall appearance, but they often are decorated with square pillars or half-columns sticking out periodically from a flat wall. There also may be a bit of decoration around the main entrance. They often resemble the large public high school buildings constructed in the same time period.

Excellent examples of Art Deco court houses in Colorado include Chaffee County (Salida), Garfield County (Glenwood Springs), Montrose County (Montrose), Morgan County (Fort Morgan), and Routt County (Steamboat Springs).

The Art Deco style was given a boost during the Great Depression of the 1930s. In the New Deal effort to stimulate the weak economy, the Works Projects Administration (WPA) of the U.S. Government provided money to construct new court houses. So many were done in Art Deco that the architecture was referred to as WPA Art Deco.

Modern. With its rapid population growth in recent years, Colorado has 15 counties with modern court houses. In the case of the more populous counties, there often are a number of modern buildings that comprise the “county government campus.” Rather than being square or rectangular in design, modern court houses can have a variety of shapes mixed together. There also is great variety in building materials. Brick, steel, glass, stone, and stucco are often mixed together in no particular pattern.

Jefferson County (Golden) gathered its various county offices into a single building complex large enough to be nicknamed the Taj Mahal. Readily visible along Interstate 70 heading west out of Denver, the building is stunning in appearance and fulfills the original idea of a county court house combining all county functions – courts, county clerk, county commissioners, etc. – under one roof.

Adams County (Brighton) took a different approach. It built a new campus of county buildings in the outskirts of the county seat. Courts were in one building, county offices in another, with all of it in a grassy parklike setting.

Most counties just add new and modern buildings as they need them. El Paso County (Colorado Springs) built a modern courts building along with a new building for county commissioner meetings across the street. In an unusual move, the county took over an unused factory building and made it the county services center.

Eclectic. A few county court houses in Colorado are so unique that they defy general categorization. The Alamosa County (Alamosa) court house is a fine example, and the only example in Colorado, of Spanish Colonial architecture. Gunnison County (Gunnison) took an unused high school building and converted it into a criminal courts building. Hinsdale County (Lake City) has the only court house in Colorado made out of wood.



FORMER ADAMS COUNTY COURT HOUSE – 1906

NOW BRIGHTON, COLORADO, CITY HALL



ADAMS COUNTY JUDICIAL CENTER – 1998

BRIGHTON



ADAMS COUNTY OFFICE BUILDING – 1998

BRIGHTON



ALAMOSA COUNTY COURT HOUSE – 1938

ALAMOSA



ALAMOSA COUNTY OFFICE BUILDING – 1975

ALAMOSA



FORMER ARAPAHOE COUNTY COURT HOUSE – 1898

WHEN ARAPAHOE COUNTY INCLUDED THE CITY OF DENVER



ARAPAHOE COUNTY COURT HOUSE – 1908

LITTLETON



ARAPAHOE COUNTY ADMINISTRATION BUILDING – 1977

LITTLETON



ARAPAHOE COUNTY JUSTICE CENTER – 1998

CENTENNIAL



ARCHULETA COUNTY COURT HOUSE – 1929

PAGOSA SPRINGS



BACA COUNTY COURT HOUSE – 1917
SPRINGFIELD



**BACA COUNTY COURT HOUSE
REAR EXTENSION**



BENT COUNTY COURT HOUSE – 1889

LAS ANIMAS



BOULDER COUNTY COURT HOUSE – 1934

BOULDER



BOULDER COUNTY HALL OF JUSTICE – 1961

BOULDER



BOULDER COUNTY JUDICIAL CENTER – 1976

BOULDER



BOULDER COUNTY COURTS BUILDING – 2001

LONGMONT



BROOMFIELD CITY-COUNTY BUILDING – 2003

BROOMFIELD



FORMER CHAFFEE COUNTY COURT HOUSE – 1883

BUENA VISTA – NOW MUSEUM



CHAFFEE COUNTY COURT HOUSE – 1932

SALIDA



CHAFFEE COUNTY JUDICIAL FACILITY – 1991

SALIDA



CHEYENNE COUNTY COURT HOUSE – 1908

CHEYENNE WELLS



CHEYENNE COUNTY COURT HOUSE

ENTRANCE DETAILS



FORMER CLEAR CREEK COUNTY COURT HOUSE – 1868

GEORGETOWN



CLEAR CREEK COUNTY COURT HOUSE – 1977

GEORGETOWN



CLEAR CREEK COUNTY COURT HOUSE

FRONT DOOR



OLD CONEJOS COUNTY COURT HOUSE – 1890-1980

ANTONITO



CONEJOS COUNTY COURT HOUSE – 1981

ANTONITO



COSTILLA COUNTY COURT HOUSE – 1883

SAN LUIS



FORMER CROWLEY COUNTY COURT HOUSE – 1916

ORDWAY



CROWLEY COUNTY COURT HOUSE – 2003

ORDWAY



CUSTER COUNTY COURT HOUSE – 1929

WESTCLIFF



DELTA COUNTY COURT HOUSE – 1958

DELTA



DENVER CITY AND COUNTY BUILDING – 1932

DENVER



FORMER DOLORES COUNTY COURT HOUSE – 1892-1945

NOW RICO, COLORADO, CITY HALL



DOLORES COUNTY COURT HOUSE – 1953

DOVE CREEK



FORMER DOUGLAS COUNTY COURT HOUSE – 1889-1978

CASTLE ROCK



DOUGLAS COUNTY COURT HOUSE – 1981

CASTLE ROCK



DOUGLAS COUNTY JUSTICE CENTER – 1998

CASTLE ROCK



EAGLE COUNTY COURT HOUSE – 1932

EAGLE



EAGLE COUNTY JUSTICE CENTER – 1991

EAGLE



FORMER ELBERT COUNTY COURT HOUSE – 1913

KIOWA – NOW ADMINISTRATION BUILDING



ELBERT COUNTY COURT HOUSE – 2008

KIOWA



FORMER EL PASO COUNTY COURT HOUSE – 1903

NOW COLORADO SPRINGS PIONEERS MUSEUM



FORMER EL PASO COUNTY COURT HOUSE
TOWER DETAIL



EL PASO COUNTY JUDICIAL COMPLEX – 2006

JUDICIAL BUILDING AT LEFT – COUNTY JAIL AT RIGHT



EL PASO COUNTY OFFICE BUILDING – THEN SHERIFF’S OFFICE – 1960

COLORADO SPRINGS



OLD FREMONT COUNTY COURT HOUSE

CANON CITY



FREMONT COUNTY ADMINISTRATION BUILDING – 1962

CANON CITY



FREMONT COUNTY ADMINISTRATION BUILDING

FRONT DETAILS



FREMONT COUNTY JUSTICE CENTER – 2002

CANON CITY



GARFIELD COUNTY BUILDING – 1930

GLENWOOD SPRINGS



GARFIELD COUNTY BUILDING WITH VETERANS MEMORIAL

GLENWOOD SPRINGS



GARFIELD COUNTY BUILDING

FRONT DETAILS



GARFIELD COUNTY ADMINISTRATION BUILDING – 2002



GARFIELD COUNTY BUILDING – 2008

RIFLE



FORMER GILPIN COUNTY COURT HOUSE – 1862

CENTRAL CITY



GILPIN COUNTY COURT HOUSE – 1900

CENTRAL CITY



GILPIN COUNTY JUDICIAL CENTER – 1995

BLACKHAWK



GRAND COUNTY JUDICIAL CENTER – 2008

HOT SULPHUR SPRINGS



GRAND COUNTY BUILDING – 1937

HOT SULPHUR SPRINGS



GUNNISON COUNTY COURT HOUSE – 1881

GUNNISON



GUNNISON COUNTY CRIMINAL COURTS – 1997

CONVERTED FORMER HIGH SCHOOL BUILDING – 1926



HINSDALE COUNTY COURT HOUSE – 1877

LAKE CITY



HUERFANO COUNTY COURT HOUSE – 1904

WALSENBURG



HUERFANO COUNTY COURT HOUSE

TOWER DETAILS



JACKSON COUNTY COURT HOUSE – 1913

WALDEN



JEFFERSON COUNTY COURT HOUSE – 1993

GOLDEN



JEFFERSON COUNTY COURT HOUSE

CENTRAL TOWER



KIOWA COUNTY COURT HOUSE – 1956

EADS



KIT CARSON COUNTY COURT HOUSE – 1909

BURLINGTON



LAKE COUNTY COURT HOUSE – 1955
LEADVILLE



FORMER LA PLATA COUNTY COURT HOUSE – 1892-1964

DURANGO



LA PLATA COUNTY COURT HOUSE – 1959

DURANGO



LARIMER COUNTY COURT HOUSE – 2003

FORT COLLINS



LARIMER COUNTY JUSTICE CENTER – 2000

FORT COLLINS



LARIMER COUNTY COURT HOUSE – 2003

LOVELAND



LAS ANIMAS COUNTY COURT HOUSE – 1913

TRINIDAD



LAS ANIMAS COUNTY COURT HOUSE
ENTRANCE DETAILS



ORIGINAL LINCOLN COUNTY COURT HOUSE – 1906

HUGO



FORMER LINCOLN COUNTY COURT HOUSE – 1923-1992

HUGO



FORMER LINCOLN COUNTY COURT HOUSE

CENTER PEDIMENT DETAILS



LINCOLN COUNTY COURT HOUSE – 1992

HUGO



LINCOLN COUNTY COURT HOUSE
ENTRANCE FROM FORMER COURT HOUSE



LOGAN COUNTY COURT HOUSE – 1910

STERLING



LOGAN COUNTY COURT HOUSE

ENTRANCE DETAILS



MESA COUNTY COURT HOUSE – 1924

GRAND JUNCTION



MESA COUNTY JUSTICE CENTER – 2000

GRAND JUNCTION



MINERAL COUNTY COURT HOUSE – 1950

CREEDE



MOFFAT COUNTY COURT HOUSE – BUILT 1918 – NEW FAÇADE 1962

CRAIG



MONTEZUMA COUNTY COURT HOUSE – 1937

CORTEZ



MONTEZUMA COUNTY COURT HOUSE

WITH ADDITION – 1960



MONTEZUMA COUNTY COMBINED COURTS – 2017

CORTEZ



MONTROSE COUNTY COURT HOUSE – 1923

MONTROSE



MONTROSE COUNTY COURT HOUSE

ENTRANCE DETAILS



MONTROSE COUNTY JUSTICE CENTER – 1998

MONTROSE



MONTROSE COUNTY COURT HOUSE

NUCLA



MORGAN COUNTY COURT HOUSE – 1936

FORT MORGAN



MORGAN COUNTY JUSTICE CENTER – 1988

FORT MORGAN



OTERO COUNTY COURT HOUSE – 1958

LA JUNTA



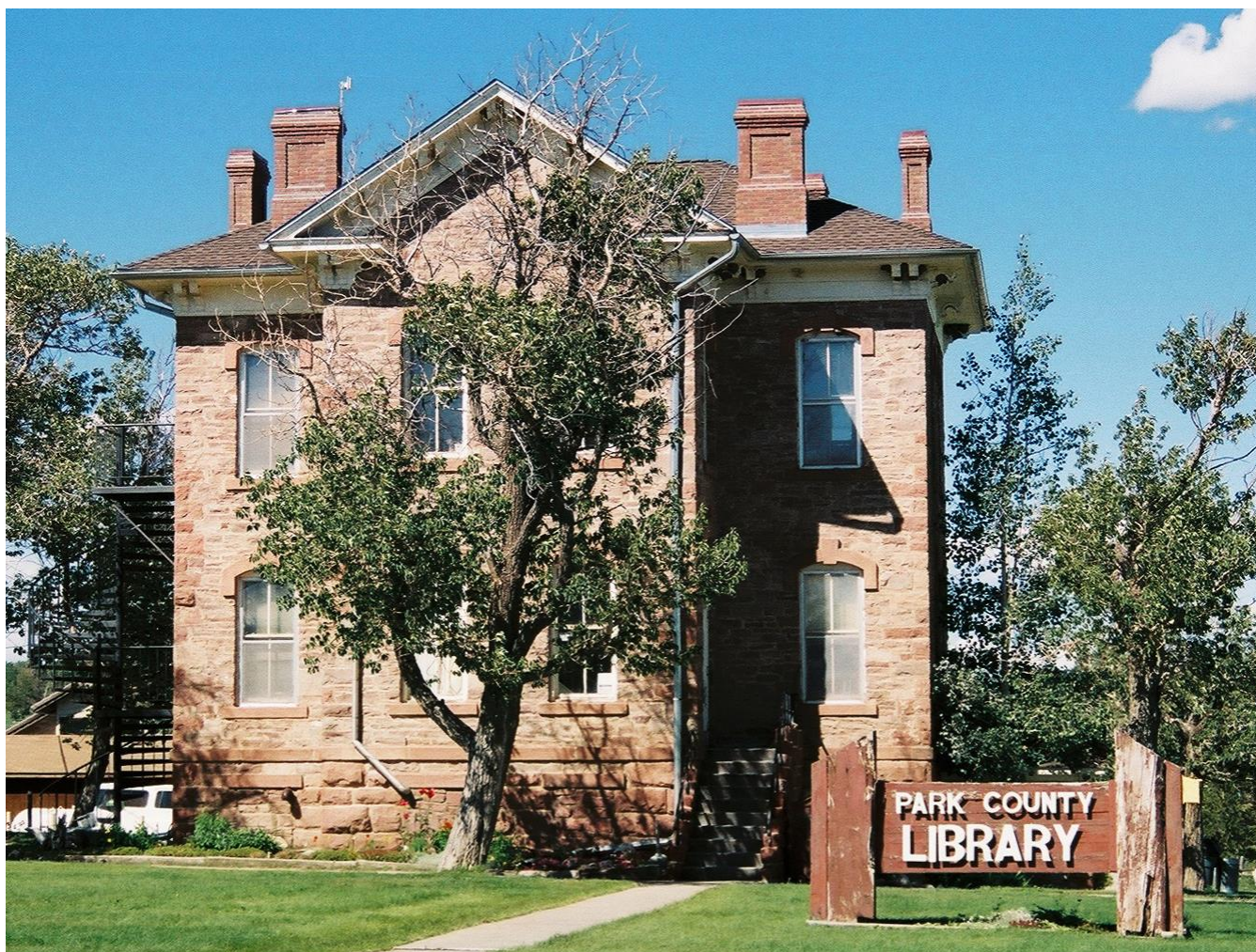
OTERO COUNTY COURT HOUSE

STREET ENTRANCE



OURAY COUNTY COURT HOUSE – 1888

OURAY



FORMER PARK COUNTY COURT HOUSE – 1875

NOW PARK COUNTY LIBRARY



PARK COUNTY COURT HOUSE – 1986

FAIRPLAY



PHILLIPS COUNTY COURT HOUSE – 1936

HOLYOKE



PITKIN COUNTY COURT HOUSE – 1890

ASPEN



PROWERS COUNTY BUILDING – 1929

LAMAR



PUEBLO COUNTY COURT HOUSE – 1912

PUEBLO



PUEBLO COUNTY COURT HOUSE

ENTRANCE DETAILS



PUEBLO COUNTY JUSTICE CENTER – 1966

PUEBLO



RIO BLANCO COUNTY COURT HOUSE – 1935

MEEKER



RIO GRANDE COUNTY COURT HOUSE – 1949

DEL NORTE



RIO GRANDE COUNTY ANNEX – 1997

COUNTY OFFICE BUILDING



ROUTT COUNTY COURT HOUSE – 1923

STEAMBOAT SPRINGS



ROUTT COUNTY COURT HOUSE

ENTRANCE DETAILS



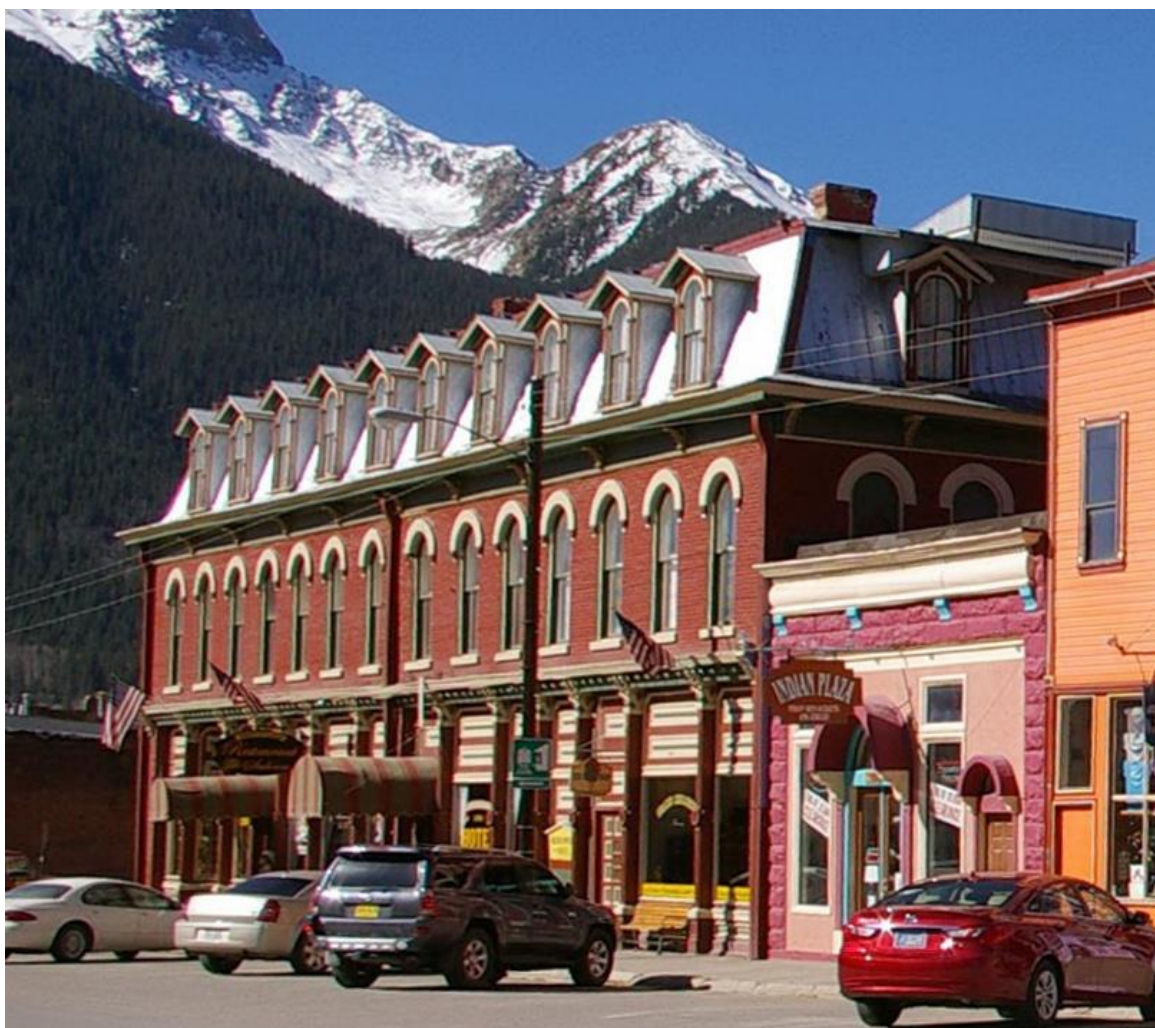
ROUTT COUNTY JUSTICE CENTER

STEAMBOAT SPRINGS



SAGUACHE COUNTY COURT HOUSE – 1910

SAGUACHE



SAN JUAN COUNTY COURT HOUSE – 1889-1908

IMPERIAL HOTEL IN SILVERTON



SAN JUAN COUNTY COURT HOUSE – 1908

SILVERTON



SAN MIGUEL COUNTY COURT HOUSE – 1887

TELLURIDE



SEDGWICK COUNTY COURT HOUSE – 1939

JULESBURG



SUMMIT COUNTY COURT HOUSE – 1909

BRECKENRIDGE



SUMMIT COUNTY JUSTICE CENTER – 1986

BRECKENRIDGE



TELLER COUNTY COURT HOUSE – 1904

CRIPPLE CREEK



TELLER COUNTY CENTENNIAL BUILDING – 1999

COUNTY ADMINISTRATIVE OFFICES



WASHINGTON COUNTY COURT HOUSE – 1909

AKRON



WASHINGTON COUNTY COURT HOUSE
CUPOLA AND DORMER WINDOWS DETAILS



WELD COUNTY COURT HOUSE – 1917

GREELEY



WELD COUNTY CENTENNIAL CENTER – 1976

COUNTY COURT HOUSE COMPLEX



YUMA COUNTY COURT HOUSE – 1904

WRAY

PHOTOGRAPH CREDITS

PAGE	COUNTY	CREDIT
9	Former Adams County Court House	Walt Loevy
10	Adams County Judicial Center	Robert D. Loevy
11	Adams County Office Building	Robert D. Loevy
12	Alamosa County Court House	Robert D. Loevy
13	Alamosa County Office Building	Robert D. Loevy
14	Former Arapahoe County Court House	uncovercolorado.com
15	Arapahoe County Court House	courthousehistory.com
16	Arapahoe County Administration Building	John Deacon: courthouses.co
17	Arapahoe County Justice Center	courthousehistory.com
18	Archuleta County Court House	Robert D. Loevy
19	Baca County Court House	Robert D. Loevy
20	Baca County: Rear Extension	Robert D. Loevy
21	Bent County Court House	Robert D. Loevy

22	Boulder County Court House	glassdoor.com
23	Boulder County Hall of Justice	John Deacon: courthouses.co
24	Boulder County Judicial Center	Boulder County
25	Boulder County Courts – Longmont	John Deacon: courthouses.co
26	Broomfield City-County Building	Robert D. Loevy
27	Former Chaffee County Court House	John Deacon: courthouses.co
28	Chaffee County Court House	Robert D. Loevy
29	Chaffee County Judicial Facility	John Deacon: courthouses.co
30	Cheyenne County Court House	Robert D. Loevy
31	Cheyenne County – Entrance Details	Robert D. Loevy
32	Former Clear Creek County Court House	John Deacon: courthouses.co
33	Clear Creek County Court House	Robert D. Loevy
34	Clear Creek County: Front Door	Robert D. Loevy
35	Old Conejos County Court House	courthousehistory.com
36	Conejos County Court House	John Deacon: courthouses.co

37	Costilla County Court House	John Deacon: courthouses.co
38	Former Crowley County Court House	Southeast Colorado Heritage: uncovercolorado.com
39	Crowley County Court House	John Deacon: courthouses.com
40	Custer County Court House	J. Stephen Conn: uncovercolorado.com
41	Delta County Court House	Robert D. Loevy
42	Denver City and County Building	John Deacon: courthouses.co
43	Former Dolores County Court House	uncovercolorado.com
44	Dolores County Court House	John Deacon: courthouses.co
45	Former Douglas County Court House	John Deacon: courthouses.co
46	Douglas County Court House	Jimmy Emerson: uncovercolorado.com
47	Douglas County Justice Center	Robert D. Loevy
48	Eagle County Court House	Robert D. Loevy
49	Eagle County Justice Center	John Deacon: courthouses.co

50	Former Elbert County Court House	Jimmy Emerson: uncovercolorado.com
51	Elbert County Court House	Jimmy Emerson: uncovercolorado.com
52	Former El Paso County Court House	Springs Area Beautiful Association
53	Former El Paso Court House – Tower Detail	John Deacon: courthouses.co
54	El Paso County Judicial Complex	David Shankbone: uncovercolorado.com
55	El Paso County Office Building	courthousehistory.com
56	Old Fremont County Court House	courthousehistory.com
57	Fremont County Administration Building	courthousehistory.com
58	Fremont County – Entrance Details	Robert D. Loevy
59	Fremont County Justice Center	John Deacon: courthouses.co
60	Garfield County Building	courthousehistory.com
61	Garfield County Building – Veterans Memorial	Robert D. Loevy
62	Garfield County Building – Entrance Details	Robert D. Loevy

63	Garfield County Administration Building	John Deacon: courthouses.co
64	Garfield County Building – Rifle	John Deacon: courthouses.co
65	Former Gilpin County Court House	John Deacon: courthouses.co
66	Gilpin County Court House	Robert D. Loevy
67	Gilpin County Judicial Center – Blackhawk	John Deacon: courthouses.co
68	Grand County Judicial Center	Walt Loevy
69	Grand County Building	Walt Loevy
70	Gunnison County Court House	Robert D. Loevy
71	Gunnison County Criminal Courts	John Deacon: courthouses.co
72	Hinsdale County Court House	Jimmy Emerson: uncovercolorado.com
73	Huerfano County Court House	Robert D. Loevy
74	Huerfano County – Tower Details	Robert D. Loevy
75	Jackson County Court House	uncovercolorado.com
76	Jefferson County Court House	Robert D. Loevy

77	Jefferson County – Central Tower	Robert D. Loevy
78	Kiowa County Court House	Robert D. Loevy
79	Kit Carson County Court House	Robert D. Loevy
80	Lake County Court House	uncovercolorado.com
81	Former La Plata County Court House	John Deacon: courthouses.co
82	La Plata County Court House	Robert D. Loevy
83	Larimer County Court House	Robert D. Loevy
84	Larimer County Justice Center	John Deacon: courthouses.co
85	Larimer County Court House – Loveland	John Deacon: courthouses.co
86	Las Animas County Court House	Robert D. Loevy
87	Las Animas County – Entrance Details	Robert D. Loevy
88	Original Lincoln County Court House	John Deacon: courthouses.co
89	Former Lincoln County Court House	Robert D. Loevy
90	Former Lincoln County – Center Pediment	Robert D. Loevy
91	Lincoln County Court House	John Deacon: courthouses.co

92	Lincoln County – Former Entrance Rebuilt	John Deacon: courthouses.co
93	Logan County Court House	Robert D. Loevy
94	Logan County – Entrance Details	Robert D. Loevy
95	Mesa County Court House	Wuse1007: uncovercolorado.com
96	Mesa County Justice Center	John Deacon: courthouses.co
97	Mineral County Court House	Robert D. Loevy
98	Moffat County Court House	John Deacon: courthouses.co
99	Montezuma County Court House	John Deacon: courthouses.co
100	Montezuma County – With Addition	John Deacon: courthouses.co
101	Montezuma County Combined Courts	Paul Brokering: The Journal
102	Montrose County Court House	Robert D. Loevy
103	Montrose County – Entrance Details	Robert D. Loevy
104	Montrose County Justice Center	John Deacon: courthouses.co
105	Montrose County Court House – Nucla	John Deacon: courthouses.co

106	Morgan County Court House	Robert D. Loevy
107	Morgan County Justice Center	John Deacon: courthouses.co
108	Otero County Court House	John Deacon: courthouses.co
109	Otero County Court House – Street Entrance	Robert D. Loevy
110	Ouray County Court House	Wikimedia Commons
111	Former Park County Court House	Robert D. Loevy
112	Park County Court House	Robert D. Loevy
113	Phillips County Court House	courthousehistory.com
114	Pitkin County Court House	Robert D. Loevy collection
115	Prowers County Building	Robert D. Loevy
116	Pueblo County Court House	Robert D. Loevy
117	Pueblo County – Entrance Details	Robert D. Loevy
118	Pueblo County Justice Center	John Deacon: courthouses.co
119	Rio Blanco County Court House	John Deacon: courthouses.co
120	Rio Grande County Court House	Robert D. Loevy

121	Rio Grande County Annex	John Deacon: courthouses.co
122	Routt County Court House	Robert D. Loevy
123	Routt County – Entrance Details	Robert D. Loevy
124	Routt County Justice Center	John Deacon: courthouses.co
125	Saguache County Court House	John Deacon: courthouses.co
126	Former San Juan County Court House	John Deacon: courthouses.co
127	San Juan County Court House	Joe Ross: uncovercolorado.com
128	San Miguel County Court House	Mario Carrera
129	Sedgwick County Court House	Wikipedia
130	Summit County Court House	Robert D. Loevy
131	Summit County Justice Center	John Deacon: courthouses.co
132	Teller County Court House	David Shankbone: uncovercolorado.com
133	Teller County Centennial Hall	John Deacon: courthouses.co
134	Washington County Court House	Robert D. Loevy

135	Washington County – Cupola and Dormer	Robert D. Loevy
136	Weld County Court House	Peter Romero: uncovercolorado.com
137	Weld County Centennial Center	John Deacon: courthouses.co
138	Yuma County Court House	Robert D. Loevy

