

*THE VICTORIAN HEART OF COLORADO SPRINGS*

---

*THE VICTORIAN HEART OF COLORADO SPRINGS*

---



**NORTH NEVADA AVENUE  
IN THE OLD NORTH END**

**BLOCKS 1200-2100**

**THE VICTORIAN HEART  
OF COLORADO SPRINGS**

A photo album of one of  
the most picturesque streets  
of Victorian-era homes in  
Colorado Springs, Colorado

**PHOTOS AND TEXT BY  
ROBERT D. LOEVY**

**The Old North End Neighborhood  
2019**

*THE VICTORIAN HEART OF COLORADO SPRINGS*

---

# CONTENTS

<b>Introduction</b>	<b>Page 5</b>
<b>East Side (odd numbers)</b>	<b>Page 7</b>
<b>West Side (even numbers)</b>	<b>Page 85</b>

# INTRODUCTION

Ten blocks of North Nevada Avenue in Colorado Springs qualify as the Victorian Heart of Colorado Springs. From East Uintah Street to East Madison Street – the 1200 block to the 2100 block – are concentrated a large number of Victorian-era upper middle-class homes financed in large part by the gold that was flowing from the ground in the nearby mining camps of Cripple Creek and Victor. Showcasing these homes and adding greatly to the Victorian charm are the broad grassy landscaped medians in the center of this stretch of North Nevada Avenue.

This book serves as a catalogue of these many homes, most of which date to the turn of the twentieth century (1890 to 1910). One can quickly thumb through it and gaze at the photographs. Those with more time can read about the basic architectural details of each house and, here and there, learn about who lived in these houses and what they accomplished in the history of Colorado Springs. In the course of such reading, the uninitiated can begin to learn about the basic architectural styles found in these ten blocks of a major city street.

*THE VICTORIAN HEART OF COLORADO SPRINGS*

---

**EAST SIDE**

**ODD NUMBERS**

**1201 TO 2129**

**NORTH NEVADA**

*THE VICTORIAN HEART OF COLORADO SPRINGS*

---



## **1201 North Nevada Avenue**

Sitting at the busy intersection of North Nevada Avenue and East Uintah Street are the Legacy Apartments. Although not of Victorian architectural design, they have been there for many years and, with their wood trimmed porches (with porch pillars and open railings), they fit nicely into the Old North End. The passing years left many Old North End residents with their children raised and gone from the large family home. The Legacy Apartments were a perfect place to relocate for old age.





## **1213 North Nevada Avenue**

Underneath all those building additions (added to create extra living space) probably sits a beautiful Victorian-era home. The large first-floor front porch, a prominent feature of many Old North End homes, remains open and is nicely decorated with double wooden columns. Large homes converted into apartments on North Nevada Avenue are a result of World War II. Colorado Springs was the site of a number of major military bases during the war, most notably Fort Carson. The resulting housing shortage encouraged owners of large old homes to carve them up into apartments to help win the war. After World War II, homebuyers purchased some of these old apartment buildings and turned them back into single-family homes.



## *THE VICTORIAN HEART OF COLORADO SPRINGS*

---



### **1217 North Nevada Avenue**

In between the larger Victorian-era homes (which were built during the Cripple Creek and Victor Gold Rush) were located the next generation of smaller and less imposing homes. Their smaller size was dictated by the gold boom coming to an end at Cripple Creek and Victor. Money for luxury home building was suddenly in much shorter supply. This home is Craftsman style. The eave brackets supporting the edge of the roof are characteristic of Craftsman homes, which were very popular in the early 20<sup>th</sup> century. Other Craftsman elements included low-pitched gable roofs, broad eaves, and exposed rafter tails. This style ushered in a more relaxed way of living.



## **1223 North Nevada Avenue**

Because of the heavy decoration, this is a Queen Anne style home, the kind that made the Old North End famous. The large front porch, rounded at the side of the house, has a pediment (triangular shaped decoration) over the main entrance. Other Victorian features include the large front window and a front-gable (pointed roof section) rising above the front porch and 2<sup>nd</sup> floor. But the real charmer is the medieval tower covered by a witch's hat (round pointed top). These "Victorian towers" were mainly for decoration.





## **1231 North Nevada Avenue**

Following a fierce rezoning battle in the early 1960s, this was one of two apartment buildings constructed at the intersection of North Nevada Avenue and East San Miguel Street. A neighborhood group, the North End Home Owners' Association, founded in 1957, sought to keep the Old North End residential, but the organization lost this particular battle. This modern apartment building was constructed as a result. The Association continued to fight requests for zone changes to commercial over the succeeding years and gained much success. The leading organizer of the North End Home Owner's Association was Jean Burns Szymanski, a resident on North Tejon Street. In the 1990s the North End Home Owners' Association was renamed the Old North End Neighborhood.



## **1303 North Nevada Avenue**

This was the second of the two apartment buildings constructed at North Nevada Avenue and East San Miguel Street. Now more than 50 years old, the two buildings are well maintained and properly landscaped. Their tenants are law-abiding and productive residents of the Old North End,





## **1311 North Nevada Avenue**

This child care center has occupied the site for more than fifty years. It is a functioning business and relevant to a residential area with children such as the Old North End. The modern architecture clashes strongly with the Victorian-era look of the Old North End. The good news is that this is the last major visible commercial structure going north in the 1200-2100 blocks of North Nevada Avenue. Except for a small bed-and-breakfast operating in a Victorian-era home, the street from this point north for eight-and-a-half blocks is strictly residential.

***THE VICTORIAN HEART OF COLORADO SPRINGS***

---



**1319 North Nevada Avenue**

A classic Dutch Colonial home with a Victorian tower and a witch's hat.



***THE VICTORIAN HEART OF COLORADO SPRINGS***



**1323 North Nevada Avenue**

This home has a modern front porch (with plain long and narrow pillars) appended to it. The roofs on the two large windows on the second-floor front are somewhat unusual.





**1327 North Nevada Avenue**

This home is Free Classic/Edwardian style. It has a gable roof with the gable facing the street. An added feature is a second smaller gable in front of the main gable. Other features are the pediment in the porch roof over the main entrance and the rounded porch roof at one end.



## *THE VICTORIAN HEART OF COLORADO SPRINGS*

---



### **1331 North Nevada Avenue**

The style of this house is Colonial Revival. This type of house is widely found throughout the Old North End and on North Nevada Avenue. The home has a “hip roof” (four slanted sides of the roof rising to a point) with a large dormer window facing the street. The dormer window has a hip roof as well. A feature of this home is the set of windows extending out of the side of the house. This extension carries up through the second floor to the third floor where it is capped by a gable roof. Note the circular window in the second floor of the extension with its elaborate wooden frame.

## *THE VICTORIAN HEART OF COLORADO SPRINGS*

---



### **1335 North Nevada Avenue**

This is a straightforward rendition of the Colonial Revival design. There is the hip roof, the dormer window coming out of the front of the hip roof, and the big front porch with rounded columns and an open railing. Note the unusual large glass window at one end of the home on the second floor. This was a “tuberculosis porch,” or at least imitated one. Because of its high elevation with cool dry air, Colorado Springs was a refuge for tuberculosis patients in the late 19<sup>th</sup> and early 20<sup>th</sup> centuries. The large windows could be opened wide, allowing the tubercular member of the family to breathe in all that cool dry air while sitting or sleeping.



## *THE VICTORIAN HEART OF COLORADO SPRINGS*

---



### **1339 North Nevada Avenue**

This elaborately detailed and maintained Victorian home is called a Queen Anne. The detailing is particularly attractive on the smaller and more forward of the two gable fronts. Twinned columns throughout the large front porch sit on solid wooden structures inserted in the porch railing. An additional feature is the cross-hatched wooden members under the front porch. The holes in the cross-hatching keep the under-the-porch area well ventilated. Cross-hatched wood panels were the preferred way of treating the under-the-porch area of homes at the turn of the 20<sup>th</sup> century.



## **1343 North Nevada Avenue**

This Free Classic/Edwardian Queen Anne home has its roof edges lined with decorated “bargeboards.” The closed porch railing is filled in with solid material, and the square porch pillars are wider at the bottom than at the top, a treatment known as “battered.” A nice touch is the witch’s hat over the rounded section of the open-air front porch. The frontyard cast iron fence was made by the Hassell iron works. It has finials with a lotus design with scrolls. The former superintendent of Colorado Springs public schools, P. K. Pattison, built this simple but beautiful home.





## **1401 North Nevada Avenue**

This Half-Timbered home was built in 1924. The decorative half-timbering (alternate wood and stucco) is in the front gable. The flared bargeboards on the gables are associated with the Craftsman style.



## **1411 North Nevada Avenue**

This is the Colonial Revival style that is popular in the Old North End. The right-side of the front porch was probably enclosed after original construction. The porch roof, used as a balcony, has a wooden railing and a door for easy access from the house. Note the designs on the top of the cast-iron fence in the foreground.



## ***THE VICTORIAN HEART OF COLORADO SPRINGS***



### **1415 North Nevada Avenue**

This home has a Dutch Colonial style roof (visible from the side of the house). Two prominent Dutch Colonial dormer windows face the street. The bent angle in the roof line is the key to identifying the Dutch Colonial, or gambrel, style. The first story is built of stone, but the roof around the dormer windows is shingled. The home was built about 1888 for Colonel Edgar Ensign and his wife Lilla. He was a leading banker in the early days of Colorado Springs. He also laid out the boundaries for the majority of the United States National Forests in Colorado.

*THE VICTORIAN HEART OF COLORADO SPRINGS*

---



**1419 North Nevada Avenue**

This is a simple and practical Craftsman bungalow. Note the bargeboards, the eave brackets, and the doubled square pillars at the corners of the façade.



## *THE VICTORIAN HEART OF COLORADO SPRINGS*

---



### **1423 North Nevada Avenue**

The bold Victorian tower, with a witch's hat, distinguishes this home. Another decorative touch is the second-story dormer window with a gabled roof. Note the cross timbering above the window right under the gable roof. The entire second story is covered with fish scale shingles. The front porch sports paired square pillars sitting on battered piers, thus suggesting the Craftsman style. The enclosed portion of the front porch was probably added post-construction. This home has an excellent example of the type of cast-iron fence that was popular in the Old North End. The fence has simple arches over lotus finials.



**1427 North Nevada Avenue**

Here is an infilling modern bungalow with a modern version of a cast-iron fence. The wood shingle siding, the gable front roof, and the stone foundation provide connection to the surrounding neighborhood.



## ***THE VICTORIAN HEART OF COLORADO SPRINGS***



### **1431 North Nevada Avenue**

This Colonial Revival style home has it all. There is a hip roof along with a double dormer window facing the street with a matching hip roof. There is a balcony atop the front porch with an open railing. The full-length front porch sports wooden columns. The large front door has sidelights and a transom. There is a large first floor front window. Of note is the decorative oculus (circular) window on the second story above the front door.



## **1437 North Nevada Avenue**

The unique feature of this home is its large shaped Victorian tower and witch's hat. In addition, there is half-timbering on the tower. An "eyebrow" style window peeks out from the center of the roof. On the opposite side of the façade from the tower is a front gable with a semi-oculus (semi-circular) window in the gable. The home was constructed with a full-length front porch that was later removed. In 1903 the home was purchased by Edgar and Lulu Ullrich. He was president of the El Paso Ice and Coal Company. Colorado Springs is in El Paso County, Colorado. This well maintained property is now an apartment house.



***THE VICTORIAN HEART OF COLORADO SPRINGS***

---



**1503 North Nevada Avenue**

This home is a Victorian cottage because it is only one-and-one-half stories high. It is of Gable Front Frame design with a “Palladian” window in the center of the front gable. Bay windows (three double-hung windows) are prominent both in front of the home and on the side. Mrs. Florence L. Rossbach, a widow and an abstract clerk, built this house in 1898

***THE VICTORIAN HEART OF COLORADO SPRINGS***



**1507 North Nevada Avenue**

This Victorian Cottage has one gable facing the front and gables on both sides. The rounding out of the front porch on one side is an unusual feature. Extra decoration is provided by the painted fish scale shingles at the top of the front gable.





## **1511 North Nevada Avenue**

On the gable facing the street, this home has a curved-top window. Dormer windows on the second story have gable roofs. The first story walls are covered with wood siding while the second story walls have fish scale shingles. On the first floor front, note the “cut-corner” window with the curved brackets. The front door is also “cut-corner” and bracketed.

***THE VICTORIAN HEART OF COLORADO SPRINGS***



**1513 North Nevada Avenue**

This Gable Front Frame house has a covered balcony on top of the full-length front porch, a treatment not frequently seen. The home has wood siding on the first two stories with painted fish scale shingles in the front gable. The front porch and the balcony have an open wooden railing. Modern style hand railings have been added to the front steps



***THE VICTORIAN HEART OF COLORADO SPRINGS***



**1519 North Nevada Avenue**

This is a Queen Anne style home. The octagonal Victorian tower is perfectly proportioned to the house and includes both a witch's hat on top and an expanded part of the front porch at the bottom. The dormer in the hipped roof is topped with a gable roof, and there is a carved or painted decoration inside the gable. On the second floor, opposite the tower, is an oculus window with an elaborate wooden frame (with pointers). A decorated pediment is built into the front porch right over the front door, which has sidelights. Note the wavy wood shingles above the windows on the tower.

***THE VICTORIAN HEART OF COLORADO SPRINGS***



**1523 North Nevada Avenue**

The most exciting feature of this home is the abundant porch space, on both the first and the second stories, with open railings. The dormer window protruding from the front side of the hip roof has a gable roof.



## ***THE VICTORIAN HEART OF COLORADO SPRINGS***

---

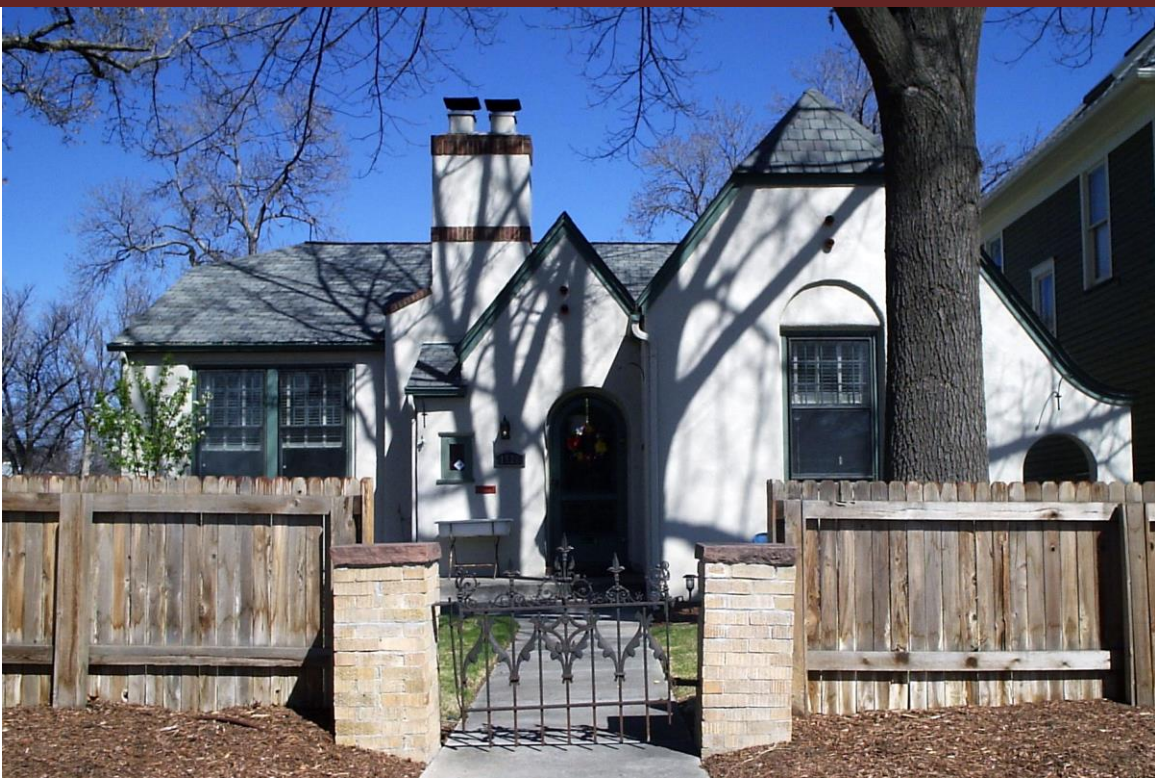


### **1527 North Nevada Avenue**

A front gable with two side gables of different sizes distinguishes this house. There is a pediment on the front porch roof over the front door. The multiple windows on the second floor on one side were probably a tuberculosis porch. The second-floor front window has an attractively decorated transom above it. There is wavy paint atop the front gable. The full-length front porch has widely spaced wooden columns with an open railing. The front yard has a classic double arch iron fence.



***THE VICTORIAN HEART OF COLORADO SPRINGS***



**1529 North Nevada Avenue**

This bungalow, covered with stucco, has the look of a European farm home. There is a cross gable roof (a front gable connecting to a side gable). Also interesting is the brick detail on the stucco covered chimney. Note the cast iron fence gate.

*THE VICTORIAN HEART OF COLORADO SPRINGS*



**1601 North Nevada Avenue**

This Free Classic-Edwardian home sports two gable roofs to the front with a third gable at the side. The “wrap-around” front porch has a pediment at the front door. There is wood siding on the first two stories and fish scale shingles in the third story gable ends. The house was built by John Henry Avery, who worked for Elkton Consolidated Mining and Milling.



***THE VICTORIAN HEART OF COLORADO SPRINGS***



**1609 North Nevada Avenue**

This is the first of five Colonial Revival homes (not in a row) that grace the east side of the 1600 block of North Nevada Avenue. All five have the hip roofs and the third story front facing dormer windows that characterize this style. Note the cast iron fence with spearhead finials.



## **1611-1615 North Nevada Avenue**

This double-gable front structure has been modified into an apartment building. The iron posts holding up the front porch roof are a modern addition, as is the brick trim on the filled in portion of the front porch. The eave brackets under the two gable front roofs are a Craftsman characteristic.



## *THE VICTORIAN HEART OF COLORADO SPRINGS*



### **1619 North Nevada Avenue**

This is the second of the five Colonial Revival homes on the eastside of the 1600 block of North Nevada Avenue. The front porch has been filled in with living space. There is a nice balcony over the front porch with an open railing. Modern railings have been added to the front steps.



## **1621 North Nevada Avenue**

This home has a low arch in the porch roof at the front door. The low arch is an unusual feature and rarely seen. It sits where one would ordinarily expect to see a pediment. The low arch is further accented by the double wood columns holding up the front porch roof.



## *THE VICTORIAN HEART OF COLORADO SPRINGS*

---



### **1627 North Nevada Avenue**

This home and the one to the north at 1629 North Nevada are almost perfect twins. They are the same in many details except for the paint colors. Both are Colonial Revival style, the fourth and fifth such homes on this side of the block. Note that, on the first floor of both houses, the porch railing is closed (filled with solid building material). On the porch roof, however, the balcony railing is open with wooden spindles. The side of the house has bay windows. This house was built in 1900. Harry J. Newman and his wife Alice bought the home in 1901. Like many early residents of the Old North End, he was in the mining business. The Newman family occupied the home for 55 years until 1956.



## **1629 North Nevada Avenue**

As previously noted, this Colonial Revival home is a near perfect twin to the house next door. One difference, however, is that this home is covered with clapboard wood siding while 1627 is clad in wood shingles.





### **1701 North Nevada Avenue**

This Colonial Revival home has a full-length door leading out to the balcony on the front porch roof. An interesting feature is the third-floor dormer window, which is low in height but highly decorated. The white wooden strips between the panes of glass are called muntins. Also interesting is the small “cross-hatched” window next to the front door.



### **1705 North Nevada Avenue**

This Craftsman home has a double gable front design with bargeboards on the ends of the gable roofs. An unusual and attractive fanlight window, or lunette, is in the front gable. It has a spider web design. The home also has a large full-length stone front porch with square wooden pillars supporting the porch roof. Note the decoration at the tops of the pillars.





## **1709 North Nevada Avenue**

This Craftsman home sports a large gable roofed dormer with half-timbering between the windows in the gable front. There are bargeboards on the ends of the dormer's gable roof. The remainder of the home is covered with wooden shingles. The front porch has square pillars with a closed railing.



### **1715 North Nevada Avenue**

This typical Colonial Revival house is distinguished by the large wrap-around front porch with paired columns and an open railing. Under the porch, wooden lattice covers the space between the stone piers.





## **1719 North Nevada Avenue**

This Colonial Revival home has the top of the front porch enclosed and turned into living space. There is a small oculus (circular) window adjacent to the front door. Charles and Minnie Wright lived in this home for 47 years. He was president of Colorado Springs Investment and Realty. She taught at the Deaf and Blind School.



## **1723 North Nevada Avenue**

The major feature of this Colonial Revival home is the large gable roof on the front-facing dormer window on the roof. The front door has sidelights, with a transom above the door and smaller transoms above the sidelights. The stone front porch and pillars are of Dawson Arkose stone, a Colorado stone. An unusual feature is the way that two windows on the second floor were set forward about two feet, probably to provide extra space in a bedroom.





## **1727 North Nevada Avenue**

This Victorian Cottage is covered with wooden shingles, including the closed porch railing. The second-floor dormer window has a hip roof that matches the larger house roof. There is a small square window next to the front door. The front porch has widely spaced columns supporting the porch roof. There is an unusual “scissor-cut” where the house roof continues over the front porch.



### **1731 North Nevada Avenue**

This style is Craftsman. The exposed eave brackets under the roof edge are a sign of the Craftsman style. There is an engaged front porch, which means the porch roof is a continuation of the main roof of the house. There is living space or storage space above the porch. The house is gable front with half-timbering in the front of the gable. The open porch railing is interesting because the spindles reflect the battering (wider at the bottom) of the square porch pillars.





## **1803 North Nevada Avenue**

This gable front Craftsman bungalow has wide roof eaves with triangular brackets. The full-width engaged porch has been glassed in to create additional living space. The home is clad in shingles. The horizontal window in the front gable is nicely framed. The multi-paned windows in the front gable match the multi-paned windows enclosing the front porch.



## **1807 North Nevada Avenue**

The most notable feature of this Victorian Cottage is the low octagonal tower with a witch's hat. The wrap-around front porch follows the shape of the tower. The home has a side-gabled roof. The porch has widely spaced columns mounted on a closed railing.



---

***THE VICTORIAN HEART OF COLORADO SPRINGS***

---



**1811 North Nevada Avenue**

This home has a Dutch Colonial (angled) roof with an octagonal turret popping out of it. The turret has a large front window and a witch's cap. A turret differs from a tower in that it emerges from an upper floor and has no tower-like base under it. The porch has a closed railing with interesting single columns, which are wider in the middle than at the ends.



## **1815 North Nevada Avenue**

This Dutch Colonial (angled roof) home has a large gable roofed dormer window with eave returns. There are four small adjoining windows in the dormer. The full-length front porch has massive stone columns and a stone closed railing. The stone in the wall in the foreground matches the stone on the front porch. All the stone is Dawson Arkose. The house was built in 1902. In 1904 it became the home of Fred and Mary Tucker, owners of the F. S. Tucker Furniture Company.



***THE VICTORIAN HEART OF COLORADO SPRINGS***



**1819 North Nevada Avenue**

This Victorian Cottage has an unusual three-window dormer. The large engaged porch has an open wood railing. The house walls and the dormer walls are covered with matching shingles.

***THE VICTORIAN HEART OF COLORADO SPRINGS***

---



**1823 North Nevada Avenue**

This home has a truncated (flattened at the top) hip roof with a dormer with six small windows. The front door has sidelights with transoms above the door and the sidelights. There is a stone front porch with stone pillars and a stone closed railing. The stone is Dawson Arkose from Colorado.



---

***THE VICTORIAN HEART OF COLORADO SPRINGS***

---



**1829 North Nevada Avenue**

This Prairie style home was built in 1906. It has a hip roof. The full-length front porch has been partially enclosed. The eaves of the roof are wide and have been boxed (covered with a wide smooth surface). In 1911 this house became the residence of Delina and Harry C. Chapman. He was president of the Giles Mercantile Company. The cast iron fence has a simple pointed finial design.

---

***THE VICTORIAN HEART OF COLORADO SPRINGS***

---



**1901 North Nevada Avenue**

North Nevada Avenue changes character somewhat as it enters the 1900 block just north of East Fontanero Street. The major housing type ceases to be Victorian-era homes and becomes Victorian cottages and bungalows instead. In fact, the entire 1900 block on the east side of North Nevada Avenue is all cottages and bungalows. It is a real “bungalow row.”

This bungalow was built of red brick, a material rarely used in the Old North End, where wood shingle and wood siding predominate. The battered (wide at the bottom) brick pillars on the front porch are interesting.



***THE VICTORIAN HEART OF COLORADO SPRINGS***



**1907 North Nevada Avenue**

This modern cottage has a side-gable roof and a nice size engaged front porch with pillars. The former automobile garage has been turned into living space.

***THE VICTORIAN HEART OF COLORADO SPRINGS***

---



**1911 North Nevada Avenue**

This bungalow has a gable front design. It sports a front porch with a pediment of sorts above the porch entrance.



***THE VICTORIAN HEART OF COLORADO SPRINGS***

---



**1915 North Nevada Avenue**

This bungalow has a large stone front porch, along with a matching stone chimney. The stone is Manitou greenstone. The gable-front roof has been “clipped” (the gable has been truncated near the peak to form a small section of hip roof).

***THE VICTORIAN HEART OF COLORADO SPRINGS***

---



**1919 North Nevada Avenue**

This home has two small clipped gables, one facing front and the other off to the side.





## **1923 North Nevada Avenue**

The “front” door on this house faces to the side. There is a triple window facing the street. A large circular window protrudes from under a side gable next to the front door. There is red brick trim on the first floor of the front gable. Note how far the house goes back on the lot. It is probably much larger on the inside than it appears from the street. The gable roof on the garage matches the gables on the house roof.

***THE VICTORIAN HEART OF COLORADO SPRINGS***

---



**1927 North Nevada Avenue**

This Craftsman cottage has a front gable. The front porch is made of red brick with large battered porch pillars. The front door has attractive sidelights.



*THE VICTORIAN HEART OF COLORADO SPRINGS*



**1931 North Nevada Avenue**

This brick and stucco home has a half-timbered look on the second story of the front gable. The brickwork around the front door is notable.



**2000 block North Nevada Avenue**

This is the Nevada side of the house, which faces on East Washington Street. This open porch is topped with living space and a gable roof. Note the diamond muntins in the gable window; the slight curve in the porch wall.



## *THE VICTORIAN HEART OF COLORADO SPRINGS*

---



### **2005 North Nevada Avenue**

This Craftsman home has a centered front gable with a side-gable roof behind it. A small square multi-paned attic window sits high in the front gable. The porch is elaborate, with paired square porch pillars on a closed stone railing. The stone in the porch is Manitou greenstone with sandstone capstones. The front door has sidelights.



***THE VICTORIAN HEART OF COLORADO SPRINGS***



**2011 North Nevada Avenue**

This Craftsman home has a partial front gable with large eave brackets supporting the gable roof. There is a large stone porch. There also is an elongated shed dormer window in the main roof.



***THE VICTORIAN HEART OF COLORADO SPRINGS***



**2015 North Nevada Avenue**

This Victorian cottage has a partial front gable coming out of a cross gable. The front porch has a gable roof as well. An exciting feature is the diamond shingles and fish scale shingles, painted a variety of colors, in both the front gable and the porch gable.



## *THE VICTORIAN HEART OF COLORADO SPRINGS*

---



### **2019 North Nevada Avenue**

This unusual small home is built of rhyolite stone. The most distinctive features are the round Victorian tower, complete with a pointed witch's hat, and the elaborate second-story dormer window with a gable roof. Note the small shed-style roof immediately above the window. The front porch is engaged (under the main roof of the house). There is an unusual pattern of roof shingles on the witch's cap on the tower. The window in the tower has a low stone arch above it.





## **2023 North Nevada Avenue**

This simple shingled Victorian cottage has a gable front design. The most unusual feature is the eave returns on the gable front, which are interrupted by the double window on the second-floor front.





## **2025 North Nevada Avenue**

This home is gable front with short eave returns. The five adjoined windows on the first floor are an unusual feature, called ribbon windows. The gable roof over the front door is supported by two wooden brackets. There are sidelights adjoining the front door. A nice touch is the fish scale shingles preserved at the top of the front gable. The front porch has a closed railing with an unusual design cut into it.





## **2029 North Nevada Avenue**

The highlights of this home are the flared (curving) roofs on both the house and the front porch. The red brick square pillars add color to the partially enclosed front porch.

## *THE VICTORIAN HEART OF COLORADO SPRINGS*



### **2103 North Nevada Avenue**

This Victorian cottage is shingled and has double front gables with short eave returns. Fish scale shingles alternate with square shingles in the gable fronts. The two-tone paint job is a style popular where fish scale shingles are found in the Old North End. There is a full-length front porch with a pediment in the porch roof in front of the main door. The porch has a closed railing which is shingled similar to the home. Emil and Jennie Rundquist were the first owners of this house. He was a bookkeeper for the Colorado Power Company. Dr. Harvey Vieth, a dentist and prominent Republican Party activist, lived here with wife Morita in the late 1990s.



***THE VICTORIAN HEART OF COLORADO SPRINGS***

---

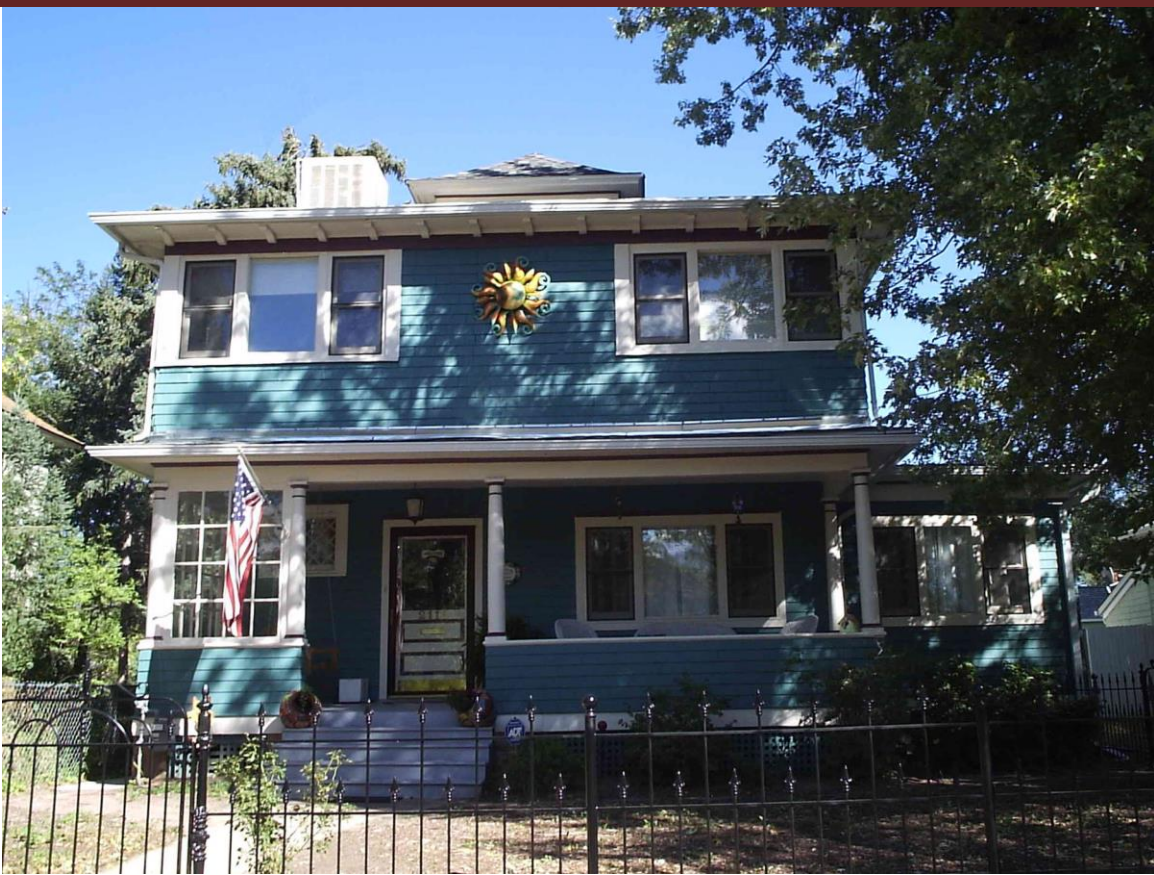


**2105 North Nevada Avenue**

The main feature of this cottage is the front porch. There is a pediment in the porch roof over the main entrance. The porch railing is closed and covered with shingles.

## *THE VICTORIAN HEART OF COLORADO SPRINGS*

---



### **2111 North Nevada Avenue**

The major design feature of this shingled home is the large triple windows on both the first and second stories. The full-length porch has been partially enclosed and sports a closed railing covered with shingles. The gold medallion on the second story front center, a bona fide architectural feature, is apparently of the sun. There is an excellent example of a cast iron fence in the foreground.



## ***THE VICTORIAN HEART OF COLORADO SPRINGS***



### **2115 North Nevada Avenue**

This simple Colonial Revival home has a double window dormer projecting from the hip roof. The dormer has a hip roof that matches the house. There is a full-length front porch with an enclosed railing. Almost all flat surfaces are covered with wooden shingles. The eaves of the roof are filled in (boxed) and decorated with modillions (thin wooden strips about a foot apart).



## **2119 North Nevada Avenue**

This Colonial Revival home has a hip roof with a front-facing dormer that has a horizontal window with small side windows. The modillions on the boxed eaves of the roof have been highlighted by painting them a different color from the remainder of the eaves. Note the matching modillions on the dormer, an exciting feature. The porch roof serves as a balcony with an elaborate open railing. The doorway out to the porch roof has been equipped with sidelights that match those on the front door to the home. It is rare to find the door to a porch roof so extensively decorated.





**2121 North Nevada Avenue**

This Victorian cottage has a hip roof with a double-windowed dormer poking out of it. There are modillions on the boxed eaves of the roof. Paired wooden columns support the full-length porch roof, and there is a pediment in the porch roof in front of the main doorway. Sidelights are on both sides of the front door. The front porch railing is closed and shingled.

***THE VICTORIAN HEART OF COLORADO SPRINGS***

---



**2127 North Nevada Avenue**

This home has a gable front design with a matching gable roof on the front porch. There is a cross gable behind the front gable. The ends of the house roof and the porch roof have been covered with bright blue-painted bargeboards. The ventilator high-up in the gable on the house is matched by a similar ventilator high-up in the gable on the front porch.





## **2129 North Nevada Avenue**

What appears to have originally been a side-gabled house, with a front-facing gable on the third floor, has been remodeled for apartments. A first-floor portion of a bay window remains with only two windows visible.

**WEST SIDE**

**EVEN NUMBERS**

**1204 TO 2132**

**NORTH NEVADA**



*THE VICTORIAN HEART OF COLORADO SPRINGS*

---



## **1204 North Nevada Avenue**

This brick and stucco Craftsman home was built in 1922. It has a side gabled roof with a front-facing gabled dormer. The dormer has a large window with two smaller side windows. There is a green tile roof with ridge tiles. The large porch has battered (wider at the bottom) piers supporting it at each corner. Louisa M. Thrall, the widow of Frank G. Thrall, built this house.





## **1212 North Nevada Avenue**

This Craftsman home has two front gables with half-timbering under the gables. There are flared bargeboards visible on the ends of the larger gable. The stone porch includes battered piers with unique short wooden paired columns supporting the porch roof. The carved detail between the paired wooden columns on the porch is unusual and interesting.



## **1216 North Nevada Avenue**

In 1898 Bramley Whitehead requested a permit for commercial space on the first floor and residential above. He opened Whitehead Groceries and Meats shortly thereafter. The Whitehead family lived in the residential portion of the home until 1927. Over the years the building housed various retail stores, including a music studio, the Egg House (another neighborhood grocery), and The Silent Woman, a home accessories store. The hip roof has a hip-roofed dormer. The covered balcony, with pillars supporting the balcony roof and an open wooden railing, is an attractive feature.





## **1220 North Nevada Avenue**

This Colonial Revival home has a double-windowed dormer popping out of the hip roof. The modillions (wooden strips) under the eaves are present both on the house roof and the dormer roof. The front door has sidelights as well as a transom. Wood columns atop a closed railing decorate the full-length front porch. A portion of the front porch roof has been built upon and turned into additional living space. This addition is topped by a shed roof. On the sunny south side of the house are bay windows.



## **1224 North Nevada Avenue**

Colonial Revival homes such as this are found in large numbers along this stretch of North Nevada Avenue through the Old North End. These houses all have the same basic plan but are always different from one another in the details. This home is covered with wooden siding and has paired columns on the full-length front porch. It is a well-maintained apartment building.





## **1232 North Nevada Avenue**

This house is mainly Italianate style. Italianate features include the low hip roof with wide eaves, the large decorative brackets under the roof eaves, and the tall narrow windows with curved corners. The large full-length front porch is a variance from the Italianate style.





**1304 North Nevada Avenue**

This is a three-story stucco apartment building with brick trim. Note the brick pilasters (ornamental exterior columns on a wall).





### **1312 North Nevada Avenue**

That attractive Victorian tower, with its witch's hat, makes this small home Queen Anne style. It has a gable front design on the main building. An attractive feature is the multiple types of decorative wood shingles under the front gable.



## *THE VICTORIAN HEART OF COLORADO SPRINGS*

---



### **1316 North Nevada Avenue**

This home was built in 1898 by Thomas J. Fisher at a cost of \$4,800. Fisher moved to Colorado Springs in 1880. He worked as a clerk for the Denver and Rio Grande Railroad and then was the personal secretary to William Jackson Palmer, the founder of Colorado Springs. Fisher also managed the Antlers Hotel, helped write the original Colorado Springs City Charter, and was the first president of the Colorado Springs Chamber of Commerce. Fisher married his wife, Ella, on September 4, 1883. She was “one of the most widely known women in Colorado Springs.” Thomas and Ella Fisher are buried in Evergreen Cemetery.



***THE VICTORIAN HEART OF COLORADO SPRINGS***

---



**1320 North Nevada Avenue**

This home has a partial front gable filled with fish scale shingles painted in multiple colors. The gable-roofed front porch is a miniature version of the front gable on the house.





## **1324 North Nevada Avenue**

Franklin E. Brooks, an attorney, was a member of the U.S House of Representatives from 1902 to 1907. He built this home about 1894. The house is Shingle style (almost all surfaces are covered with wooden shingles). There is an overhanging front gable filled with fish scale shingles. Note the slightly protruding double window on the second floor front.



*THE VICTORIAN HEART OF COLORADO SPRINGS*



**1328 North Nevada Avenue**

This Gable End Frame home has a full-length front porch with a pediment over the front entrance. On the sunny side of the house are bay windows.





### **1332 North Nevada Avenue**

This two-story Craftsman home has a low gable front design with a large pediment over the front entrance. The rafter tails on the roof and the front porch are exposed, and there are triangular wooden brackets under the eaves of the roof. Note how the ends of the brackets come through the bargeboards on the house roof. The full-length front porch and its square pillars are built of Manitou greenstone. Craftsman homes often have stone porches and pillars.





## **1336 North Nevada Avenue**

This one-story Craftsman home is typical of the smaller houses constructed on North Nevada Avenue in the Old North End after gold was no longer being profitably mined in Cripple Creek and Victor. The rafter tails on both the roof and the porch roof are exposed. The front porch has a closed railing.



## **1342 North Nevada Avenue**

This is a Free Classic/Edwardian Queen Anne style home built around 1896. It has two front gables. There are bay windows on both the front and the sunny side. Wood shingles cover the first-floor walls while fish scale shingles adorn the second and third stories. Alvaro Hemenway, a mining investor and grocery store owner lived here, as did his son, O. E. Hemenway, vice president of Colorado Springs National Bank.



## *THE VICTORIAN HEART OF COLORADO SPRINGS*

---



### **1404 North Nevada Avenue**

This is a large Colonial Revival home. There is a hip roof with a cross gable on the side and gable-roofed dormer windows. There are modillions (wood strips) in the wide boxed eaves of the roof. The large wrap-around porch has triple columns at the corners and open wooden railings on both the porch and the balcony. Note the curved railing on the balcony. There is a fanlight over the front door with sidelights. A Victorian-era cast iron fence is in the foreground. Architect Thomas MacLaren designed this home for Louis and Mary Giddings, who owned the Giddings Department Store at N. Tejon and E. Kiowa streets.



## **1410 North Nevada Avenue**

A large gable-roofed dormer on the second floor distinguishes this Craftsman home. The gabled dormer in the roof is matched with a decorative gable-roof end added at the first floor right. Both gables sport triangular roof brackets and bargeboards. The engaged front porch has columns and a closed railing. The wide eaves on this house provide shade and a shield from rain or snow.



*THE VICTORIAN HEART OF COLORADO SPRINGS*

---



**1414 North Nevada Avenue**

This unique design has a large wrap-around porch with a partial slanting shingled roof and then a full wrap-around balcony. There are wooden columns on the wrap-around porch and an open railing. A simple pediment rises out of the porch roof at the front entrance.



## **1420 North Nevada Avenue**

This shingle-covered Queen Anne home dates from about 1894. This hip roof house has small gables in the front and the side with fish scaled shingles in the gables. Also at the top of the gables are interesting triangular overhangs above the square gable windows. A dormer window with its own hip roof faces the street. There is a simple full-length front porch with an open railing. The home was built by photographer Charles Emery and his wife Bertha. He was famous for photographing early scenes of life in Colorado Springs at the turn of the 20th century.



***THE VICTORIAN HEART OF COLORADO SPRINGS***

---



**1424 North Nevada Avenue**

This stucco home mixes architectural styles. There is a Half-Timbered partial gable on the main part of the house with a dormer window with a hip roof close by. The front porch, an arcaded loggia with large square pillars, resembles the Spanish Mission style, as do the gate and gateway wall.



## **1428 North Nevada Avenue**

This Colonial Revival home has a hip roof with a double window dormer. There is an oval window with a large wooden frame adjacent to the front door. A full-length front porch and roof were probably removed from this house and replaced with a small open porch and bracketed porch roof. There are modillions under the eaves of the roof.





## **1430 North Nevada Avenue**

This is a fine example of the Colonial Revival style. The hip roof has a dormer window facing the front. The walls are covered with wood clapboard siding. There are bay windows on both the front of the house and on the sunny side. The large circular wrap-around porch has widely spaced wooden columns supporting the porch roof. The simple front door has a small transom.



### **1432-1434 North Nevada Avenue**

This duplex house has a mixture of architectural elements. The most notable feature is the two-story Victorian tower with its witch's hat. That suggests a Queen Anne style. The house is stucco and the front porch is arcaded, which implies Spanish Mission style. One of the arcades has been filled in with a window inserted. The house has a front gable and side gables of equal size.



## *THE VICTORIAN HEART OF COLORADO SPRINGS*



### **1440 North Nevada Avenue**

Here is a large Colonial Revival house. It has been modified into an apartment building. There is a double window dormer on the hip roof that sports its own hip roof. Wood clapboard siding covers the exterior walls. The wrap-around porch has its roof supported by evenly spaced wooden columns.

## *THE VICTORIAN HEART OF COLORADO SPRINGS*

---



### **1504 North Nevada Avenue**

An example of the Shingle style, this shingle-covered home borrows features from the Craftsman style. It has a partial front gable that matches the smaller gable roof on the front porch entrance. There also is a gable roof on the dormer window on the third floor. The wrap-around porch has a balcony above it with an open wooden railing. An unusual feature is the two shingled pillars located next to the two wooden columns on either side of the front porch entrance. The flared bargeboards on the house gable and the porch gable are Craftsman style. The home was built by Ira J. Morse, a wholesale produce dealer, and his wife Annie.



***THE VICTORIAN HEART OF COLORADO SPRINGS***



**1510 North Nevada Avenue**

This stucco-covered house is of Gable Front Frame design. It has an engaged front porch as well as a porte cochere (covered area where vehicles can drop off and pick up passengers).



## **1512 North Nevada Avenue**

This shingle-covered house has a Gable Front Frame design with half-timbering in the front side of the gable. There are short eave returns at each edge of the roof. A portion of the front porch appears to have been enclosed to create additional living space.





## **1516 North Nevada Avenue**

The full-length front porch with paired wooden columns mounted on a closed railing is the major feature of this home. The area above the front porch has been built upon to create more living space. The front door with sidelights is attractive. The wide boxed eaves under the roof edges are typical of the Prairie style. James P. Shearer and wife Jessie were the first occupants of this house. He was one of the owners of the Perkins Shearer clothing store, a prominent downtown business. James Shearer also was president of the Chamber of Commerce, a park commissioner, and a senior warden at Grace Episcopal Church.



## **1520 North Nevada Avenue**

This home was built about 1894 in Queen Anne style. Portions of the two second-floor front gables have been half-timbered, and the front porch has a partial balcony. The home was first occupied by G. B. Turnbull, the former principal of Colorado Springs High School (now Palmer High). William Strachan, a retired rancher, and wife Jessie later resided here.



## *THE VICTORIAN HEART OF COLORADO SPRINGS*

---



### **1524 North Nevada Avenue**

This Free Classic/Edwardian Queen Anne house has fish scale shingles in the two front gables facing the street. The large wrap-around front porch (a later addition) has a flattened pediment over the entrance and battered square pillars supporting the front porch roof. The porch railing is closed and has been covered with the same stucco that covers the lower portions of the house. There is an interesting arch over the large first-floor window on the front side of the home, and an equally interesting decorative band in the stucco under the fish scale shingles in the larger of the two front gables. Willis L. Strachan and his wife Oattie lived in this house from 1924 to 1948. He served as El Paso County attorney from 1912 to 1916 and was the district attorney from 1916 to 1924. While living in this home he was a member of the law firm of Strachan, Horn and Anderson.

## *THE VICTORIAN HEART OF COLORADO SPRINGS*



### **1528 North Nevada Avenue**

This charming Colonial Revival home has a hip roof topped by a widow's walk. The double-windowed dormer in the hip roof has a gable roof. There are modillions – ornamental blocks used to support the eaves of the roof. Very unusual, and attractive, are the special roof sections over the two large “built out” windows on the second-floor front. The front porch roof has a small open rail balcony above the front porch entrance. The large front door has sidelights. The cloth sign hanging on a portion of the front porch railing was supporting an Old North End tree planting program for the grassy medians in North Nevada Avenue in Colorado Springs.



*THE VICTORIAN HEART OF COLORADO SPRINGS*

---



**1532 North Nevada Avenue**

Here is another example of a Colonial Revival home in the Old North End. The elaborate third-floor dormer window has a curved gable roof with a Palladian window with a sunburst crown. There are modillions in the boxed eaves of the roof. Particularly decorative is the curving extension of the front porch at the main entrance. The porch roof is supported by wooden columns with an open railing. The curving on the porch is matched by the curved sidelights adjoining both sides of the front door.

## *THE VICTORIAN HEART OF COLORADO SPRINGS*



### **1600 North Nevada Avenue**

This Spanish Mission style home was built in 1924. It has the classic stucco walls, often painted white, and the arched façade windows that are typical of this style. Dr. W. A. Campbell, a physician and former chief-of-staff at Memorial Hospital, built this house.





## **1616 North Nevada Avenue**

This Victorian cottage has a partial end gable filled with fish scale shingles above the first story. The double-windowed dormer has a gable roof, and there is a large shed roof on top of the partial-length front porch. These homes appear small from the street but, because they go back a long way, are often quite roomy inside.





## **1620 North Nevada Avenue**

This home is almost a twin to the one next door at 1616 N. Nevada Avenue. Notice how the hipped roof has been flattened at the top. It is also interesting how the double-windowed dormer has been cut into the edge of the roof, a feature not found on the house at 1616.





## **1624 North Nevada Avenue**

This Queen Anne home is distinguished by a two-story tower with an ornament at the top of the witch's hat. The partial front gable next to the tower has an interesting rounded wall above the second-story window. Notice how the wrap-around front porch widens to follow the shape of the tower.

*THE VICTORIAN HEART OF COLORADO SPRINGS*



**1628 North Nevada Avenue**

The partial gable on the façade of this home has a double window and fish scale shingles. There is a side gable on the structure which matches the partial front gable but has only one window. The front gable has eave returns. The full-length front porch has wooden columns supporting the porch roof.





## **1632 North Nevada Avenue**

This home has a centered partial gable with two windows in it. A nice touch is the oculus (circular) window next to the front door. This oval window shows the four points of the compass in its elaborate wooden frame. The large wrap-around front porch has battered (wide at the bottom) pillars mounted on a closed railing.





## **1702 North Nevada Avenue**

This is a Gable Front Frame style house. There is a low-arched triple window in the front gable. The wrap-around porch has interesting low arches. This home has wood clapboard siding on the walls and shingles in the many gables. Dr. George Wilson, a dentist in Colorado Springs for 46 years, and his wife Alice built this residence in 1905.





## **1708 North Nevada Avenue**

This house is a classic example of the Colonial Revival style. There is a large gable-roofed dormer in the hip roof. There are modillions (painted black) supporting the boxed eaves of the roof, and corner boards decorate the corners of the exterior walls. There is a large wrap-around front porch with a balcony on top enclosed with an open railing. The large front door has both a multi-window transom and sidelights. Slightly battered single wooden columns support the porch roof.





## **1712 North Nevada Avenue**

This Gable Front Frame home belonged for a while to Artus and Anne Van Briggie. They were famous Colorado Springs-based pottery makers.





## **1716 North Nevada Avenue**

This home has a partial front gable filled with fish scale shingles and short eave returns. There is a roomy wrap-around front porch and a pediment over the front-porch entrance. An attractive feature is the fine wood decorations running below the front edge of the porch roof all along the front porch. The round wooden columns on the front porch have unique butterfly-shaped wood work at the top.



## **1718 North Nevada Avenue**

The angle in the roofline makes this a Dutch Colonial home. The house is covered with wooden shingles with two different shingle types. The extra-large wrap-around porch has an attractive design – a spoked wheel – built into the wooden porch railing. There is an interesting wooden ornament displayed at the top of the façade just under the point of the roof. Edwin C. Woodward, an assayer and chemist, and his wife Annie built this home in 1897.





## **1724 North Nevada Avenue**

This Gable Front Frame house is elaborately decorated. The wooden overhang atop the two windows in the front gable is unusual. There are modillions in both the full-length eave and the overhang in the front gable.





## **1728 North Nevada Avenue**

The outstanding feature of this cottage is the arcaded front porch with its two graceful arches supported by pillars. The house is covered with shingles and has a hip roof with a double-window front dormer. Modillions grace the eaves of the house roof. An interesting touch is the full-length front porch with an open wooden railing on one side and a closed shingle-covered railing on the other. From 1903 to 1920 this was the home of Edward and Elizabeth Preston and their son Eugene. Edward Preston was a stenographer at the El Paso County courthouse. His wife Elizabeth was a poet and active in local clubs such as the Women's Literary Club and the Federation of Women. Their son, Eugene, was a poet and a commissioned officer in World War I.





## **1730 North Nevada Avenue**

This cottage has a Gable Front Frame design. There is a full-length front porch with a closed railing covered with the same shingles that cover the house. There are coursed shingles at the peak of the front gable. The large protruding window in the front gable has a small shed roof (one-plane roof). The large front door has interesting partial sidelights. It is unusual to see a cottage with so many detailed features.



## **1802 North Nevada Avenue**

This Colonial Revival home has a hip roof with a highly decorated third-floor dormer window. The dormer window is topped with a gable roof. There is a matching dormer window on the roof on the side of the house. The full-length front porch is topped with a balcony with an open wooden railing. The porch roof is supported by single wooden columns. The porch railing is closed. The front doorway is nicely decorated with sidelights and a transom. Edward W. Davis, a part owner of Crissey-Davis Lumber Company and owner of a carriage and tack business, built this house for his wife, Sarah, in 1902.





## **1806 North Nevada Avenue**

This Shingle style home has a Dutch Colonial roof to the side with a front gable facing the street. The front gable sports short eave returns. The triple window in the third-floor front is attractive. The double window on the third-floor side has an interesting sort of slightly protruding “eyelid” above it. The front porch is supported by widely spaced single wooden columns. Built in 1901, this home was the longtime residence of Katherine Lucas, a dressmaker.





## **1812 North Nevada Avenue**

This cottage is covered with shingles. The design is Gable Front Frame. In the gable on the second floor is a protruding double window that has a slanted shingled covering. A pediment decorates the front porch roof at the entrance. Note the fine woodwork below the edge of the front porch roof. Also note the wooden porch column turned on a lathe for decoration.



---

***THE VICTORIAN HEART OF COLORADO SPRINGS***

---



**1814 North Nevada Avenue**

This home has a partial gable roof facing the street. The lengthy eaves of the roof are supported by modillions. There is a cluster of windows on the side of the house at the second floor. They were probably built for a person or persons with tuberculosis. The full-length wrap-around front porch has been enclosed with windows. At one time a macramé craft shop operated there. There is a pediment in the porch roof over the front entrance.



## **1820 North Nevada Avenue**

This cottage has been covered with stucco. The distinguishing feature is the hip roof with the large dormer window protruding out of it on the second floor. The arcaded front porch, with its two low arches and three columns, is engaged (covered by the main roof of the house). The low arches suggest Spanish Mission style.



---

*THE VICTORIAN HEART OF COLORADO SPRINGS*

---



**1824 North Nevada Avenue**

This cottage has a partial front gable with a balcony with an open railing in front of it. To the rear there is a dormer with a double window. The dormer window is elaborately decorated with a gable roof and a wide eave above the double window. There is a partial-length wrap-around front porch with a closed railing. The exterior walls of the home are covered with wood siding.



## **1828 North Nevada Avenue**

This Gable Front Frame home is covered with wood siding. It has a full-length front porch with a large pediment-style porch roof supported by square wooden pillars atop a closed porch railing. A nice touch is the eave brackets on both sides of each of the two second-floor windows. There are modillions on the underside of the eaves of the roof on the front gable.



## *THE VICTORIAN HEART OF COLORADO SPRINGS*

---



### **1832 North Nevada Avenue**

This is an excellent example of a Colonial Revival home. It has the usual hip roof with a dormer window. Modillions decorate the eaves of the roof. There is a full-length front porch with a balcony on the front porch roof. The balcony is enclosed by a decorative open wooden railing. The exterior walls of the house are covered with wood siding.

## *THE VICTORIAN HEART OF COLORADO SPRINGS*



### **1904 North Nevada Avenue**

This cottage is Gable Front Frame style with shingles covering the exterior walls. Modillions decorate the eaves of the roof. There is a triple window on the second-floor front. The front porch has a shed roof and has been fully enclosed. The foundation and lower porch walls are Manitou greenstone.



## *THE VICTORIAN HEART OF COLORADO SPRINGS*

---



### **1908 North Nevada Avenue**

This Craftsman style home has a hip roof with a front-facing partial gable. The engaged front porch has doubled square pillars and a closed railing of stone. There is half-timbering in the front-facing partial gable. The foundation and front porch stone are Dawson Arkose.



## **1912 North Nevada Avenue**

This home has a hip roof with eye-brow dormers (a curved low dormer with no sides). On the first floor a large bay window faces the street. The porch roof is supported by square wooden single pillars. An interesting feature is the first-floor and second-floor windows at the rear of the house. They have a flat semi-circular design.





### **1916 North Nevada Avenue**

This cottage has been covered with stucco. It has a basic Gable Front Frame design but with a partial gable in front of the main gable. The circular ventilator in the partial gable is attractive. The arcaded front porch with its two low arches suggests the Spanish Mission style. Note the triple set of windows in the main gable.



## **1920 North Nevada Avenue**

This Dutch Colonial home has a shingled roof with three second floor dormer windows. The two outer dormer windows have gable roofs and the center window has a shed roof. Note the diamond muntins on the second-floor windows. There is a partial front porch with single wooden columns.



## *THE VICTORIAN HEART OF COLORADO SPRINGS*

---



### **1924 North Nevada Avenue**

Here is a Colonial Revival home with classic modillions in the boxed (covered) eaves of the roof. There is a nice pediment in the front porch roof at the front door. The full-length front porch has sculpted (decoratively designed) wooden columns supported by an open wooden porch railing.

## *THE VICTORIAN HEART OF COLORADO SPRINGS*

---



### **1928 North Nevada Avenue**

This cottage has a partial front gable with a small horizontal window at the top of the gable. There are modillions in the eaves of the gable roof as well as the eaves of the main roof of the house. Decorative touches include a half oculus (half circular) window on the first floor next to a clipped (recessed) window indented into the corner of the house. The indented window is enclosed by a small railing with a post finial (decorative top to a post).





### **1930 North Nevada Avenue**

This cottage is very similar to the house next door at 1928 North Nevada. The partial front gable, the half-oculus window, and the indented window at the corner are all repeated. The indented corner windows on these two houses are unusual and rare.

## *THE VICTORIAN HEART OF COLORADO SPRINGS*

---



### **2004 North Nevada Avenue**

This Gable Front Frame house has fish scale shingles in the gable along with three double-hung windows in a row. There is a large wrap-around front porch with widely spaced single wooden columns. There are bay windows on the side of the house. The Gable Front Frame design is the second most popular architectural style in the Old North End.



## *THE VICTORIAN HEART OF COLORADO SPRINGS*

---



### **2008 North Nevada Avenue**

This house and the one next door at 2004 North Nevada are almost a perfect pair in terms of architectural details. One of the few differences is this house has “wavy” shingles in the front gable rather than the fish scale shingles found at 2004. This house also has no shutters on the second-floor front windows.

## *THE VICTORIAN HEART OF COLORADO SPRINGS*

---



### **2012 North Nevada Avenue**

This cottage is built to the Gable Front Frame style. There is a small three-window turret extending outward from the front gable. The turret has a small portion of a witch's cap roof on top of it. The turret is a turret rather than a tower because it does not extend all the way down to the first floor. Fish scale shingles cover both the front gable and the lower portion of the turret. For emphasis, portions of the shingles have been painted in contrasting colors. The full-length front porch has square wooden pillars.



## *THE VICTORIAN HEART OF COLORADO SPRINGS*



### **2014 North Nevada Avenue**

This house has two front gables with triple windows in both gable fronts. The front door has sidelights. One half of the front porch was enclosed to create more living space. This home exhibits features of the Craftsman style in that it has exposed rafter tails at the eaves of the roofs and eave brackets.

***THE VICTORIAN HEART OF COLORADO SPRINGS***

---



**2020 North Nevada Avenue**

This home has a side-gable roof with a two-story Victorian tower at the center front. There is a witch's cap roof atop the tower. The glassed-in front porch is unusual in that it follows the shape of the tower.





## **2024 North Nevada Avenue**

This is the same house as at 2020 North Nevada, but without the glassed-in porch. Another difference is that the tops of the gables on the side gabled roof have been “clipped.” As at 2020, the porch gets its shape from the shape of the Victorian tower. Both houses demonstrate the use of a tower to give a real Victorian look to a home.



## **2028 North Nevada Avenue**

This shingle-covered Victorian Cottage has an engaged (under the main roof and living space of the house) front porch. The front porch roof is supported by wooden columns. There is a large plate glass window to the left of the porch, probably installed sometime after the original construction of the house. The small window looking out on the front porch is a nice touch. The two small windows under the main gable have a projected top.





**2030 North Nevada Avenue**

This Dutch Colonial style house has a full-length front porch with square wooden pillars atop a closed railing. The angled roofline (which makes it Dutch Colonial) is also known as a gambrel roof.



## ***THE VICTORIAN HEART OF COLORADO SPRINGS***

---



### **2104 North Nevada Avenue**

This is the third use of this building design on the same side of the street in two blocks (see 2020 and 2024). As with the other two, the front porch mimics the shape of the center front Victorian tower. There are two unique features on this home, however. The roof on this house is a Dutch Colonial (gambrel) roof, and the open front porch and pillars are built of Dawson Arkose stone from Colorado.





## **2108 North Nevada Avenue**

This Victorian Cottage has many Victorian touches but at a smaller scale. It is Gable Front Frame style with a double window in the gable front. The home is covered with wood siding but has fish scale shingles in the gable front. The full-length front porch has widely spaced wooden columns with an open railing. The glassed-in areas at both ends of the porch serve as windbreaks. There is a large side gable and, also on the side, a bay window.



## **2112 North Nevada Avenue**

This shingle-covered Victorian Cottage is Gable Front Frame style with a set of four windows in the front gable. The full-length front porch has a pediment over the front entrance with unusual “saw tooth” looking shingles in it.





## **2116 North Nevada Avenue**

This home has a hip roof with a large front gable protruding from it. There are a variety of shingle styles inside the front gable. The lower level of shingles is fish scale design. There is a full-length front porch with widely spaced wooden columns.



*THE VICTORIAN HEART OF COLORADO SPRINGS*



**2120 North Nevada Avenue**

Stucco walls and rounded corners on the front porch give this house a touch of the Spanish Mission style.





## **2124 North Nevada Avenue**

This house is cross gabled, with a side gable roof and a front gable roof intersecting in the middle of the roof. There is a bay window adjacent to the front door.



## **2128 North Nevada Avenue**

This Gable Front Frame home is covered with wood siding but sports shingles at the top of the front gable. There is also a half-oculus (half-circular) ventilator at the top of the front gable. Intended or not, the wood decoration below the ventilator creates the appearance of an ice cream cone. The gable roof on the front entrance relates nicely with the gable front style of the main building. Both the front entrance and the main building have eave returns on the gable roofs.





**2132 North Nevada Avenue**

This Craftsman bungalow has the exposed rafter tails associated with that style. The gable front of the home is half-timbered and has a small horizontal center window. The full-length front porch has doubled wooden pillars supported by stone piers. There is an open railing on the front porch between the stone piers.

*THE VICTORIAN HEART OF COLORADO SPRINGS*

---



*THE VICTORIAN HEART OF COLORADO SPRINGS*

---